

データベース構築促進及び技術開発に関する報告書

海外向け国内先端技術分野
中堅企業情報英文データベース構築

平成 3 年 3 月

財団法人 データベース振興センター

委 託 先 コムラインインターナショナル株式会社

本報告書は、日本自転車振興会から競輪収益の一部である機械工業振興資金の補助を受けて作成したものである。

序

データベースは、わが国の情報化の進展上、重要な役割を果たすものと期待されている。今後、データベースの普及により、わが国において健全な高度情報化社会の形成が期待される。さらに海外に対して提供可能なデータベースの整備は、国際的な情報化への貢献および自由な情報流通の確保の観点からも必要である。しかしながら、現在わが国で流通しているデータベースの中でわが国独自のものは3割にすぎないのが現状であり、わが国データベースサービスひいてはバランスある情報産業の健全な発展を図るためには、わが国独自のデータベースの構築およびデータベース関連技術の研究開発を強力に促進し、データベースの拡充を図る必要がある。

このような要請に応えるため、(財)データベース振興センターでは日本自転車振興会から機械工業振興資金の交付を受けて、データベースの構築および技術開発について民間企業、団体等に対して委託事業を実施している。委託事業の内容は、社会的、経済的、国際的に重要で、また地域および産業の発展の促進に寄与すると考えられているデータベースの構築とデータベース作成の効率化、流通の促進、利用の円滑化・容易化などに関係したソフトウェア技術・ハードウェア技術である。

本事業の推進に当って、当財団に学識経験者の方々に構成されるデータベース構築・技術開発促進委員会(委員長 山梨学院大学教授 蓼沼良一氏)を設置している。

この「海外向け国内先端技術分野中堅企業情報英文データベース構築」は平成2年度のデータベースの構築促進および技術開発促進事業として、当財団がコムラインインターナショナル株式会社に対して委託実施した課題の一つである。この成果が、データベースに興味をお持ちの方々や諸分野の皆様方のお役に立てば幸いである。

なお、平成2年度データベースの構築促進および技術開発促進事業で実施した課題は次表のとおりである。

平成 3 年 3 月

財団法人 データベース振興センター

平成2年度 データベース構築促進・技術開発委託課題一覧

分野	課題名	委託先
社会	1 形態学的コメントを含む病理データベースの フィージビリティ調査	(株)エス・ピー・オー
	2 災害情報データベース支援環境の構築	(株)防災都市計画研究所
	3 AV/ARCのための分類索引データベースの構築	(株)ダイソメディアサービス
	4 気候情報データベースの構築	(株)エムテーエス雪氷研究所
	5 健康の自己管理と病気予防データベースの構築	(株)コンピュータコンビニエンス
	6 シルバーエイジの実態及び生活に必要な情報の データベース構築のための調査研究	美崎高齢者福祉互助会美崎生活館
	7 交通事故調査データのデータベース化に関する 調査研究	(財)日本自動車研究所
地域活性化 中小企業振興	8 アジア太平洋交流データベースの課題性の研究	(株)西日本新聞社
	9 戦略商圏レベルに細分化した地域データと分析・ 提案手法を統合化した企画支援システム データベースの構築	パラシュート情報開発研究会 札幌凸版印刷(株)
	10 ネットワーク化された地域情報データベース の有効なマネジメントについての調査研究	セントラル開発(株)情報図書館 RUKIT
	11 徳島市中小商業振興データベースの構築	(株)ニューメディア徳島
	12 九州地域の人材情報データベース構築	(財)九州産業技術センター
海外	13 海外向け国内先端技術分野中堅企業情報英文 データベース構築	コムラインインターナショナル(株)
	14 海外規格(ソ連邦国家規格)データベースの整備	日本電子計算(株)
	15 政府開発援助(ODA)に関するデータベース の構築調査	(財)日本国際協力システム
	16 専門用語データベースシステムの機能に関する 調査研究	アイ・エヌ・エス(株)
	17 専門家データベース構築事業	(財)海外貿易開発協会
技術	18 VAN用データベース管理システムの開発	シャープ(株)
	19 レコードマネジメント用辞書管理システムの 開発研究	(株)オフィス総研
	20 建築CAD用拡張可能データベースのプロト タイプ作成	三菱電機(株)
	21 先進複合材料データベース・プロトタイプの 作成	(財)次世代金属・複合材料 研究開発協会
	22 マイクロコンピュータのプログラマブル周辺 デバイスのデータベース化	(社)日本システムハウス協会
	23 書誌データベース用ダイナミック・シソーラ スの可能性調査と実験	(株)紀伊國屋書店

目次

1.	データベース構築の目的	1
2.	実施内容	1
2-1	構築概要	1
2-2	収録概要	2
2-3	データベースシステムの構築	3
3.	実施体制	3
3-1	編集手順・方法	3
4.	データベース仕様	5
4-1	データベース構築の環境	5
4-2	データベース入力画面	5
4-3	出力フォーマット	14
4-4	オンライン化の為のデータ処理について	14
5.	予想される効果	16
5-1	国内のデータベース	16
5-2	海外のデータベース	17
6	今後の課題	17

資料Ⅰ：アンケート用紙

資料Ⅱ：データベース元サンプル

資料Ⅲ：データベースアウトプットサンプル

1. データベース構築の目的

日本で経済・産業情報を英文で過去4年にわたりダイアログ、BRS、データスター等のネットワークを通じビジネス情報ファイルを通して提供してきたコンプラインの経験で、いま海外のデータベース利用者が日本から欲しい情報としてよく耳にするものの一つは、先端技術を持つ日本の中堅企業に関するデータである。

日本の企業情報は東証一部・二部に上場している企業の場合は、様々なソースから既に情報の入手が可能であるが、中堅以下の企業情報は、高価につく個別調査(信用調査等)を除いては、海外の企業にとって非常に情報の入手が困難である。このことは、意図的ではないにせよ、日本から海外への情報提供システムの不備と指摘されてもやむを得ないところである。

本データベースの構築は、こうした海外の日本情報のニーズの中でも特に企業情報についてのニーズに着目し、海外の利用者の立場に立った先端技術分野を中心とする日本の中堅企業情報英文データベースを需要に対応するものである。また構築された企業情報データベースは、実用的なデータベースとして、海外の企業が容易にアクセスできるように、国内・海外のデータベース業者を通して積極的に流通を図ることを目的としている。

2. 実施内容

本データベースでは、日本の中堅クラスの企業情報を収集し、英文でのデータベース化を図るが、作成したデータベースが日本語ではなく英語ということもあり、データベース構築上の効率化を考慮に入れ、ただ単に企業情報をデータベース化したのではなく、ある程度、産業分野別に絞った企業データベースの構築を目指した。収録の企業を産業別に分けたことによって将来的なデータベースの拡張・充実を図ることが可能となるであろう。

2-1 構築概要

本企業情報データベースを構築するにあたって、以下の項目を満たしている企業を対象としてデータベースの編集・構築をした:

- 会社の規模としては中堅企業やたとえ小企業でも先端的技術分野にかかわるものなど
 - ※ 通常の手段では情報を得にくい部分に特に重点を置く

- 話題性の高い企業

- ※ 主な判断基準としては、過去2年以内に国内の一般紙、業界紙などに企業紹介か、その企業の扱っている商品・製品・サービスについてなんらかの形で紹介・掲載されているということを目安にし、こうした企業をできるだけ含めるようにした。

2-2 収録概要

収録の業種は、日本の産業の中でも世界的規模で活躍のめざましい業種で、いわゆる知識集約的産業とした。業種は以下の通りである：

- バイオテクノロジー関連
- 製薬・医療機器関連
- 化学薬品関連
- 新素材関連

- ※ データベースに収録した企業は日本の企業が中心であるが、外資系企業の日本子会社も収録した。

データベースの収録内容は、ただ単に企業名と住所、会社役員名の収集・収録に留まらず、海外の企業が利用するにあたって必要となり得る情報の収録も目指した。データベース収録データの内容構成は以下とした：

- 英文会社名(機関名)
- 日本語会社名(ローマ字読み)
- 所在地
- 電話番号・ファックス番号
- 主要な事業の説明文を、60ワード程度で作成
- 業種分類名・業種分類コード・海外での使用に対応するため SIC コード(米国政府の標準産業分類コード)を使用し各企業に付加した
- 設立年月日
- 資本金
- 社員数
- 関連会社(親会社、子会社、出資者、所轄機関、関連機関)
- 代表者名
- 海外担当者名(役職)
- 取引銀行
- 過去3年間の売上規模
- データ更新日
- 当該企業関連記事の紹介(記事タイトル、掲載日、掲載紙)

2-3 データベースシステムの構築

収集・収録されたデータベースは磁気データ化して、パーソナルコンピュータ (IBM、AT スタANDARD) 上で上記のデータ項目の検索がある程度可能となるように、検索ソフトを開発し、海外での流通を目指した。また、構築されたデータは磁気テープに落とす等して大型コンピュータ上の検索システムでデータベースサービスとしての流通も可能となっている。

3. 実施体制

企業情報データベースに収録した企業のデータは基本的にすべてコムライン社の報道部が担当した。

● 企業情報収集・編集

コムラインインターナショナル株式会社

○ 報道部

企業データ収集業務 3名

○ 編集部

データ英文化・インデックス業務 3名

● パーソナル・コンピュータ用データベース検索システム作成

コムラインインターナショナル株式会社

○ データベース部

検索システム開発 1名

3-1 編集手順・方法

日々、日本の経済・産業ニュースをモニターしている当社報道部との協力によって前述の要求項目を満たす企業を探し、英文記事を作成する日常の作業と平行して企業情報のデータベースを作成した。

コムライン社の報道部は、毎日の記事編集に於て日本の産業情報をモニターし、最先端の研究開発や話題性の高い企業を記事として紹介しているので、企業情報収集にはコムライン社の中でも最適の部署であると考えられた。また、コムライン社の報道部が企業情報の収集に加わることによってデータ収集時にコムラインの経済・産業記事を添えて企業に送るなどして、取材された企業からの協力も得られやすいという利点があった。

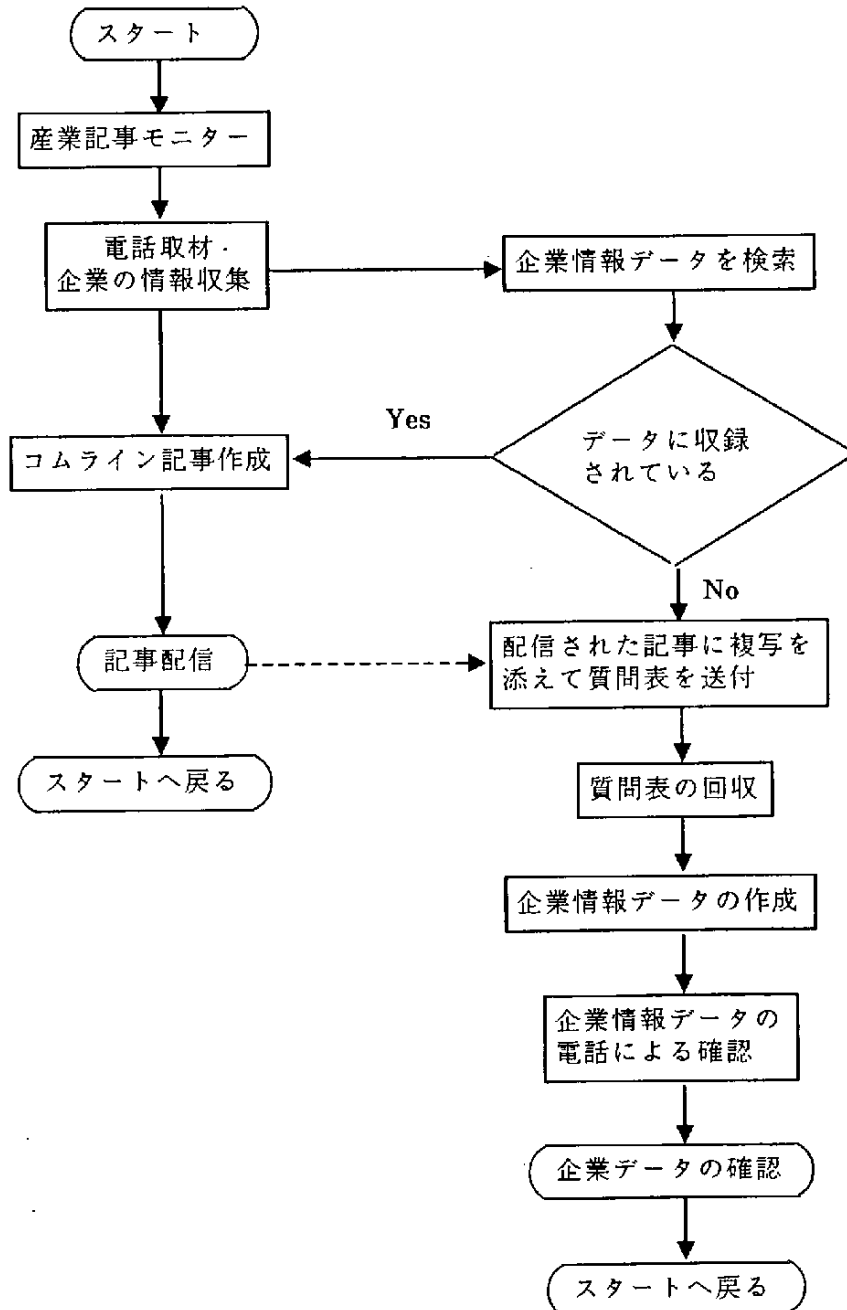
今後、企業データ特に関連記事の蓄積・更新は当社通常業務としてパソコン上で図り、更新する各企業のデータは毎年1回とする。

以下は企業情報データ収集・編集の手順と方法のフローチャートである:

企業情報データ収集・編集プロシージャ

コムライン産業情報
記事作成プロシージャ

企業情報データ
作成プロシージャ



フローチャートの左側は、コムライン社が提供している英文経済・産業情報の作成プロシージャを示している。フローチャートの右側に示す手順が企業情報データベースの作成手順である。本データベースでは、従来から行われている記事作成に平行して企業情報を作成した。

4. データベース仕様

4-1 データベース構築の環境

本データベースの構築にあたりコムライン社では開発費用の高価なメインフレーム上での開発を避け、パーソナルコンピュータ上でのシステム開発とデータベース構築を目指した。また、構築されるデータをオンラインデータベース、CD-ROMデータベースや出版物として後々流通展開することを前提にして、なるべくデータの出力フォーマットの変更・変換が可能となるように汎用的なシステム開発を努めた。そのため、データの入力や検索、そして出力等全てをPC用データベースアプリケーションソフトを用いて開発した。

以下に、今回のデータベース構築に使用したハード・ソフトを記する:

使用機種:

- ☐ IBM AT 及び互換機種
- ☐ NEC 9800シリーズ

DB構築用ソフト(IBM AT用):

MICRORIM R:BASE ver.3.0
MICRORIM R:BASE ver.3.1

DB構築用ソフト(NEC 9800用):

ビーコンシステム/MICRORIM R:BASE ver.2.2

DB検索・出力ソフト:

MICRORIM R:BASE ver.2.1 (コンパイラー)

4-2 データベース入力画面

本データベース構築時のデータベース入力の仕様について説明する。本データベースは性質上、データベース各項目の拡張性と編集機能が求められた。また後々のオンライン化に向けたデータ処理が可能となるように設計されている。そのため、データベースシステムとしての効率の向上は今回開発の第一目的とせず、各々のデータ項目は「テキスト」や「インテジャー」と言った厳密な定義付けを避けた。よって、ほとんどのデータ項目は仮に「インテジャー」として定義付けが可能であっても「テキスト」として扱い、編集作業の効率化を重視している。後の章で記述するが、本データベースの一つの項目の中で複数のデータを記載する場合はデリミター“;”や“,”を挿入

してあるため「テキスト」化されて入力したデータであっても、後にオンラインシステムに移行・変換する時点でDB項目の厳格な定義化や「インテジャー」データとして扱いが可能となっている。

以下に本データベースの編集作成用入力画面(図1)とその各項目の説明、また図1に対応するデータベーステーブル(表1)の紹介をする。尚、本データベースを構築する上で本データベースの各編集者は、企業から送られた「回答表」を用いて作成している。

Company Names / Number

CO, JCO = COMPANY NAME, JAPANESE COMPANY NAME

登録される企業の正式名を英語と日本語(ローマ字読み)の両方で登録。英語の正式名が回答表に無い場合は、日本語名を使って記入している。テキスト 45文字

RV = REVISION DATE

データ更新または新規登録の日付を記入。テキスト 8文字

CONO = COMPANY NUMBER

本データベースに登録される企業の登録番号。この番号は、データベース登録順に付与され、コムライン社内で本データベース構築にあたって編集管理番号となっている。また、本データベースの最後の項目としてデータベースに登録された企業の関連記事とのリレーショナルデータベース構築でインデックス番号として用いられてる。インテジャー 5桁

Codes

TS = TSE CODE

東証登録。東京証券取引所 1部・2部に登録されている会社の場合、東証番号を入力した。テキスト 6文字

PC = SIC CODES

米国NTIS (National Technical Information Service) から提供されているSIC業種分類コード。本データベースは欧米での仕様に耐えるよう、業種分類法については欧米でスタンダードとされるSIC業種分類コード (Standard Industrial Classification) を基にしている。収録される企業によっては多種のSICコードが記入されるため、インテジャーとしてのデータベース構築はせずテキストデータとして扱っている。尚、複数のSICコードが付加された場合は、“,” をデリミターとしてデータを収録。テキスト 100文字

Address / Phone

- AD = ADDRESS (PART 1)**
ビル名または番地等。住所の番地等の項目毎に“;”を挿入。
テキスト 38文字
- AD2 = ADDRESS (PART 2)**
ADに収録出来なかった場合はこのフィールドに住所情報を登録。通常大都市部の「○×△区」が登録される。
テキスト 38文字
- CY = CITY**
市・町・村の名前。もし住所に「○×△群」とあった場合は、この項目に登録。テキスト 25文字
- PF = PREFECTURE**
都道府県名。テキスト 20文字
- ZIP = ZIP CODE**
郵便番号。テキスト 6文字
- TE = TELEPHONE AREA CODE**
電話番号(市外局番のみ)。テキスト 6文字
- PH = PHONE NUMBER**
電話番号(市外局番を含み全桁)。テキスト 18文字
- FX = FAX NUMBER**
ファックス番号(市外局番を含み全桁)。テキスト 18文字

Revenue and Additional Statistics

- YR = YEAR FOUNDED**
収録企業の設立年月日。インテジャー 4桁
- CA = CAPITAL**
払い込み資本金。百万円を単位としているため小数点で入力・出力される。ダブルプリシジョン全 16桁
- EM = NUMBER OF EMPLOYEES**
社員総数。インテジャー 16桁
- SADE1 = REVENUE DESCRIPTION 1**
売上規模。3期前の会計年度と決算時期を記述。
テキスト 40文字

- SA1 = REVENUE 1**
3期前の売上額。ダブルプリシジョン 16桁
- SADE2 = REVENUE DESCRIPTION 2**
売上規模。2期前の会計年度と決算時期を記述。
テキスト 40文字
- SA2 = REVENUE 2**
2期前の売上額。ダブルプリシジョン 16桁
- SADE3 = REVENUE DESCRIPTION 3**
売上規模。前期の会計年度と決算時期を記述。
テキスト 40文字
- SA3 = REVENUE 3**
前期の売上額。ダブルプリシジョン 16桁

CEO

- NO = CEO NAME**
代表取締役名。テキスト 23文字
- NOTL = CEO TITLE**
代表取締役の正式な役職名。テキスト 45文字

Contact

- CT = CONTACT**
営業担当窓口の名前。テキスト 23文字
- CTTL = CONTACT TITLE**
営業担当窓口の正式な役職名。テキスト 45文字

Banks

- BK = BANKS**
取引先銀行名。複数行の場合は各レコードの間に“;”のデリミターを挿入。テキスト 350文字

Branches

- BR = BRANCHES**
支店、出張所、事務所等。複数の場合は各レコードの間に“;”のデリミターを挿入。テキスト 350文字

Factories

FA = FACTORIES
工場。複数の場合は各レコードの間に“;”のデリミターを挿入。テキスト 350文字

Laboratories

LA = LABORATORIES
研究所、ラボ等。複数の場合は各レコードの間に“;”のデリミターを挿入。テキスト 350文字

Parent Companies

PN = PARENT COMPANY NAMES
親会社。テキスト 200文字

Subsidiaries

SN = SUBSIDIARY COMPANY NAMES
関連子会社。テキスト 400文字

Product Information

PR = PRODUCT INFORMATION
製品情報。テキスト 600文字

Business Description

DE = BUSINESS DESCRIPTION
事業概要説明文。テキスト 600文字

本企業情報ファイルは上述の企業情報と、コムラインニュースから作成された関連記事タイトルデータベースの2種類から構成されている。下記の関連記事タイトルデータベースは、各企業情報に「CONO」番号を使ってリンクされている。

Company Number

CONO = COMPANY NUMBER
関連記事をデータベース化し、企業情報とリンクするために各レコードにこの番号が登録される。

Citation (s)

- CINO = CITATION NUMBER**
関連記事の登録番号。時系列で最も古いヘッドライン(見出し文)レコードを最初の番号(1)とし、時系列に登録番号が増える。インテジャー 3桁
- CITL = CITATION TITLE**
コムラインニュース記事のヘッドライン(見出し文)。テキスト 130文字
- CIRF = CITATION REFERENCE**
コムラインニュース記事の関連記事名及びコムラインニュース記事番号。複数のレコードが登録される場合“;”を挿入しデリミターとした。テキスト 200文字
- CILD = CITATION LOAD DATE**
コムラインニュース記事発行日。テキスト 40文字
- RV = REVISION DATE**
関連記事データ更新日。テキスト 8文字

Company Names / Number		Revision : 8 CHAR
English	: 45 CHAR	Company # : 5 CHAR
Japanese	: 45 CHAR	
Codes		
TSE	: 6 CHAR	
SIC (s)	: 100 CHAR	
Address / Phone		
Address 1:	38 CHAR	Zip : 6 CHAR Area : 6 CHAR
Address 2:	38 CHAR	PH : 18 CHAR
City /Pref	: 25 CHAR / 20 CHAR	FX : 18 CHAR
Revenue And Additional Stats		
YR Founded :	4 CHAR Capital : 16 CHAR	#Of Employees : 6 CHAR
Revenue 1	: 40 CHAR	Total 1 : 16 CHAR
Revenue 2	: 40 CHAR	Total 2 : 16 CHAR
Revenue 3	: 40 CHAR	Total 3 : 16 CHAR
CEO		
Name	: 23 CHAR	
Title	: 45 CHAR	
Contact		
Name	: 23 CHAR	
Title	: 45 CHAR	
Banks		
350 CHAR		
Branches		
350 CHAR		

Factories	
350 CHAR	
Laboratories	
350 CHAR	
Parent (s)	
200 CHAR	
Subsidiaries	
400 CHAR	
Product Information	
600 CHAR	
Product Information	
600 CHAR	
Company	Revision : 8 CHAR
Company #	: 5 CHAR
Citation	
Citation #	: 2 CHAR
Title	: 130 CHAR
Reference	: 200 CHAR
Road Date	: 40 CHAR

TABLE: CPNY

#	Name	Type	Length		Detailed Name
1	CONO	INTEGER	5	CHAR	COMPANY NUMBER
2	CO	TEXT	45	CHAR	COMPANY NAME
3	JCO	TEXT	45	CHAR	JAPANESE COMPANY NAME
4	TS	TEXT	6	CHAR	TSE CODE
5	AD	TEXT	38	CHAR	ADDRESS (PART 1)
6	AD2	TEXT	38	CHAR	ADDRESS (PART 2)
7	CY	TEXT	25	CHAR	CITY
8	PF	TEXT	20	CHAR	PREFECTURE
9	ZP	TEXT	6	CHAR	ZIP CODE
10	TE	TEXT	6	CHAR	TELEPHONE AREA CODE
11	PH	TEXT	18	CHAR	TELEPHONE NUMBER
12	FX	TEXT	18	CHAR	TELEPHONE FAX NUMBER
13	PC	TEXT	100	CHAR	SIC CODES
14	YR	INTEGER	4	CHAR	YEAR FOUNDED
15	CA	DOUBLE	16	CHAR	INITIAL CAPITAL
16	EM	INTEGER	6	CHAR	NUMBER OF EMPLOYEES
17	NO	TEXT	23	CHAR	CEO NAME
18	NOTL	TEXT	45	CHAR	CEO TITLE
19	CT	TEXT	23	CHAR	CONTACT NAME
20	CTTL	TEXT	45	CHAR	CONTACT TITLE
21	RV	DATE	8	CHAR	REVISION DATE
22	BK	TEXT	350	CHAR	BANKS
23	SADE1	TEXT	40	CHAR	REVENUE DESCRIPTION - 1
24	SA1	DOUBLE	16	CHAR	REVENUE - 1
25	SADE2	TEXT	40	CHAR	REVENUE DESCRIPTION - 2
26	SA2	DOUBLE	16	CHAR	REVENUE - 2
27	SADE3	TEXT	40	CHAR	REVENUE DESCRIPTION - 3
28	SA3	DOUBLE	16	CHAR	REVENUE - 3
29	BR	TEXT	350	CHAR	BRANCHES
30	FA	TEXT	350	CHAR	FACTORIES
31	LA	TEXT	350	CHAR	LABORATORIES
32	PN	TEXT	200	CHAR	PARENT COMPANY NAMES
33	SN	TEXT	400	CHAR	SUBSIDIARY COMPANY NAMES
34	PR	TEXT	600	CHAR	PRODUCT DESCRIPTION
35	DE	TEXT	600	CHAR	BUSINESS DESCRIPTION

TABLE: COCI

#	Name	Type	Length		Detailed Name
1	CONO	INTEGER	5	CHAR	COMPANY NUMBER
2	CINO	INTEGER	2	CHAR	CITATION NUMBER
3	CITL	TEXT	130	CHAR	CITATION TITLE
4	CIRF	TEXT	200	CHAR	CITATION REFERENCE
5	CILD	TEXT	40	CHAR	CITATION LOAD DATE
6	RV	DATE	8	CHAR	REVISION DATE

4-3 出力フォーマット

4-2によって構築された企業情報データの出力はデータベースからのデータダンプとしてプリント出力または磁気媒体への出力が可能であり、本報告書には磁気出力したデータをDTP(デスク・トップ・パブリッシング)によって編集加工したサンプルを添付(資料Ⅲ)した。

4-4 オンライン化の為のデータ処理について

本データベースは、本格的なオンラインデータベース化を意識してデータの構築が進められている。しかしプロジェクトの初年度はデータの蓄積件数がまだあまり多くないことや、試行錯誤にともなうデータベースそのものの度重なる仕様変更等もありデータベースの構築・開発はすべてパーソナルコンピュータ上でおこなわれている。パーソナルコンピュータ上のデータは勿論磁気化されたデータであり、後々のオンラインサービスのためのデータ編集が非常に容易になっている。

資料ⅡはDTPに出力印刷する前のデータアウトプットのサンプルである。

資料ⅢにあるデータはDTPフォーマットによって印刷されたものであり、これはパーソナルコンピュータ上で構築されたデータをDTP用のテキストフォーマットに変換してプリントした物である。データの処理そのものは簡単な方法であり、資料Ⅲは、データベースから出力し得るデータフォーマットのほんの一例に過ぎない。

この度のデータベース構築では、検索システムの開発はプロジェクト本来のデータベース構築とはまた別個にとりあげられるべき大きなテーマである事もあり、十分力を注ぐまでには至らなかった。しかし将来的にはメインフレーム上でのシステム移管と開発・運営が可能となるように、現在構築中のデータを設計した。

データの構造そのものは拡張性と構築システムの簡略化を重視したため、ほとんどのデータをテキストデータとして扱っている。厳格に定義されたデータフィールド(ダブルプレシジョン、インテジャー、テキスト等)を備え、且つインデックスファイルを備えていないのはそのためである。しかし、構築されているデータ項目の中で将来的に拡張若しくはインデックス化される事が予期されるものは、すべてテキストデータであっても各項目の中の少項目(小分類)にはデリミター(“;”や“,”等)を挿入などして将来の拡張性に備えている。

例：

現在のSICデータ：

.....; "2835, 2836, 3841 (データフィールド余白) ";
; " <----- 100 Characters -----> "

上記のデータは米国で一般的に使用されている業種分類コードであるが、現在のデータベースの中では各分類コードの説明文が添えられていない。これらの説明文は既にSICコードの中で決められた文があり、NTISで磁気化もされている。この為、オンラインデータベースとして本格的な展開を図る前に受け側のオンラインシステム上でデータ変換テーブルを設けることによって以下のようなデータに拡張・改良を施すことが可能となる。

将来的に可能なSICデータ：

.....; "2835 ; In Vitro and In Vivo Diagnostic Substances ; 2836; Biological Products, Except Diagnostic Substances ; 3841; Surgical and Medical Instruments and Apparatus" ;

NTISから出されているSIC磁気データ等をデータ変換テーブルに持つ等して上記の様なデータに拡張が可能となる。

5. 予想される効果

本データベースによって構築された企業データベースによって期待される効果は以下の通りである。

- DPC の委託事業として開始した本企業データベース事業は、民間レベルでの中堅規模の企業を収集したデータベース構築に弾みがつき、日本国内で現在までにまだ英文化されていない企業情報や信用情報などの情報サービスの英文化、データベース化をうながし国際的な流通を促進することになる。
- 海外のデータベース利用者、たとえばジョイントベンチャーのパートナーを探す企業あるいは有望な投資先を探す投資家、証券会社等を中心に幅広い利用層が見込められる。利用の形態としては、パーソナルコンピュータ上のデータベースとして利用が望める他、国内・海外のオンラインデータベース上でのサービス展開が考えられる。
- データの利用頻度については、最近の日本情報についての需要から予想するとかかなり高いものとなるであろう。利用の用途としては、日本の産業情報を様々なデータベースで検索した後や、一般的な取引業務上必要とする日本の企業情報のアクセスのために利用が見込まれる。
- 作成した本企業データは日本の先端技術分野中堅企業のデータのごく一部のみであるため、継続して追加編集が望まれる。最終的には3万社程度の企業データベースの構築を3年以内に目指す。作成された本データは最終的規模の約10分の一であるが、収録の対象となる企業は海外でも頻繁にアクセスされる分野の企業であり、データベースサービスとして初年度からビジネスベースで成立しやすい。

5-1 国内のデータベース

オンラインデータベース化した場合、国内ではコムライン社が直接提供している COM-NET オンラインデータベースのユーザー約300社を含め、COM-NET のゲートウェイ先であるエヌ・アイ・エフ社提供の NIFTY-Serve の利用者約10万人の利用が可能となる。COM-NET のユーザーはそのほとんどが外資系の利用者か外国からのアクセスであるが、NIFTY-Serve の場合は、10万人の国内ユーザーと、米国からは世界最大のパソコンネットワーク Compuserve の利用者からのアクセスが同時に可能となる。また他の国内 DB に対するゲートウェイが計画されており、数年以内にかかなりの利用者が見込まれる。

5-2 海外のデータベース / CD-ROM 出版社

海外のデータベースネットワークとしては、現在コムラインが既に記事情報の提供をしているDialog、BRS、DataStarをはじめ、Textline等のネットワークに対してのデータの提供が考えられる。またCD-ROM化や出版物としての可能性も高く、委託先/編集著者であるコムライン社が多方面に交渉を開始している。

6. 今後の課題

今回の英文企業データベース作成プロジェクトにより当社がデータベース化できたのはバイオインダストリー、ケミカル分野の企業約2,300社である。要した人員はデータ収集要員3名、英文化作業兼データ入力要員3名、データベースプログラム担当要員1名という当初考えていたよりは手間と時間のかかる作業であった。

しかし、今回なんとか完成にこぎつけ一段落ついたことにより、データ収集からデータベース完成までの一連の作業手順を当社に定着させることができた事は大きな成果であったと言える。

今後は引続き収録企業数を拡大すると同時に収録企業データの更新作業を行ってゆく予定である。対象とする企業は今回手のまわらなかった分野(エレクトロニクス、通信、コンピュータ、機械など)に広げることを当面の目標としている。

また、今回完成した2,300社については当社がすでにゲートウェー接続を行っている海外のロイター、データスター(ヨーロッパ最大手のデータベースサービス)等とのデータベースネットワークとデータ提供契約を積極的に推しすすめ海外からのアクセスを容易にし、現在高まりつつある海外で日本企業の情報が得にくいとの声に対しての日本国内からの対応努力として示してゆく計画である。

今回取り上げたようなテーマは有用なものでありながら初期投資にかなりの金額負担があり、もし委託プロジェクトとして認められていなければ当社一社では踏み切ることのできないものであった。幸いデータベース振興センター委託プロジェクトとして中核となる部分が完成できたことは非常に意義深いものがあり、当社としては、今後当該データベースのさらなる改善と拡張を図りながら日本企業の国際交流促進の一助となるような充実したものとしてゆきたい。

資料 I : アンケート用紙

データ記入用フォーム (先端企業名データベースインプット用)

- ① お手数を省くため既知データを記入いたしましたが、誤りがあれば赤で御訂正下さい。
- ② なるべくすべてのデータを記入していただければ情報公開上、非常に意義がありますが、もし社外秘である場合には㊟とだけ御記入下さい。
- ③ 当社用項目とある部分は当社で記入しますのでブランクのまま御放置下さい。

平成 年 月 日 現在

記入者名	役職名
	フリガナ
	Tel

[社名]:(英語での社名、もしなければローマ字で記入)

ローマ字 _____

[住所]: ローマ字 _____

[Tel]: () [FAX]: ()

[会社概要]: _____

[業務概要]: _____

[主要製品]: (もしできれば英語名で、不明の場合は日本語で結構です。)

1 _____

2 _____

3 _____

[SICコード]: (当社で記入) _____

[設立年度]: 年(西暦)
[資本金]: 百万円
[社員数]: 名

[代表取締役社長]: 日本語.....
.....

[海外担当者名]: ローマ字.....
..... (役職名)

[取引銀行]:

[売上]:	1988年	月決算 百万円
	1989年	月決算 百万円
	1990年	月決算 百万円

[データ更新日]: (当社用項目) 年 月 日

[記事]: (当社用項目)

※以下については必要なければ“無”に○印。有の場合、もし欄が足りない場合は申し訳
ありませんが同様の形式で御追加下さい。

[親会社]: (もしあれば英語名)(有・無)

ローマ字

.....

[支店・工場・研究所等]: (英語での名称が決まっていれば英語名) (有・無)

ローマ字

(所在地)フリガナ(読みにくい地名の場合)

.....
_____ 県 市

ローマ字

フリガナ

.....
_____ 県 市

ローマ字

フリガナ

.....
_____ 県 市

ローマ字

フリガナ

.....
_____ 県 市

ローマ字

フリガナ

.....
_____ 県 市

[子会社]: (英語での名称が決まっていれば英語名) (有・無)

ローマ字

(所在地)ローマ字

.....

ローマ字

ローマ字

.....

ローマ字

ローマ字

.....

資料 II : データベース元サンプル

SET QUOTES=NULL
 SET QUOTES="
 SET DELIMIT=NULL
 SET DELIMIT=","
 SET SEMI=NULL
 SET SEMI=";"
 SET PLUS=NULL
 SET PLUS="+"
 SET CASE OFF
 SET AUTOSKIP OFF
 SET REVERSE ON
 SET BELL OFF
 SET NULL " "
 SET DATE SEQUENCE YYYYMMDD
 SET TIME SEQUENCE HHMMSS
 SET CURRENCY " " PREFIX 0 B
 SET TOLERANCE 0.
 LOAD CPNY

8068,"Achilles Co., Ltd.,"Akiresu K.K.,"5142","22-5, Daikyo-cho","-0-","Sh+
 injuku-ku","Tokyo","160","3","03-3341-5111","03-3355-3274","3021 3081 2295 3+
 714",1947,14627.,2808,"Masao Tonooka","President","Sadao Nakajima","Vice-pre+
 sident",,"Fuji Bank, Tokai Bank, Mitsui Taiyo Kobe Bank, Yasuda Turst and Ba+
 nking Company ,Ashikaga Bank","March, 1988 (3 month term)",37363.,"March, 19+
 89",101632.,"March, 1990",108809.,"Kansai Branch (Osaka-shi), Hokkaido Branc+
 h (Ishikara-gun), Joto Branch (Arakawa-ku, Tokyo), Kyushu Branch (Fukuoka-sh+
 i)","Yamabe Factory (Ashikaga-shi), Nishinomiya Factory (Ashikaga-shi), Miku+
 riya Factory (Ashikaga-shi), Shiga First Factory (Nosu-gun, Shiga-ken), Shig+
 a Second Factory (Okami-gun, Shiga-ken), Bibai Factory (Bibai-shi, Hokkaido)+
 , Kyushu Factory (Kaho-gun)","-0-","-0-","-0-","1. Footwear +
 2. Plastic products +
 3. Industrial materials","+"

Has a leading market share of about 20% in casual and children's shoes. Exp+
 anding into industrial materials such an PVC films, artificial leather, new +
 building materials and water processing equipment. Also has a PVC vinyl fil+
 m production line in the US, operated by local concern Achilles USA. Starti+
 ng production of semi-hard transparent vinyl."

8069,"Aicello Chemical Co., Ltd.,"Aisero Kagaku K.K.",,"45, Koshigawa, Ishi+
 makihon-cho","-0-","Toyohashi-shi","Aichi-ken","441-11","532","0532-88-4111"+
 ,"0532-88-5102","3081",1933,200.,350,"Nobuhiro Makino","President","Nobuhiro+
 Makino","President",,"Sumitomo Bank, Tokai Bank, Aichi Bank, The Shoko Chuk+
 in Bank","March, 1989",10130.,"March, 1990",10337.,"March, 1991",10900.,"-0-+
 ", "Factory (Toyohashi-shi)","-0-","-0-","-0-","1. Polyethylene films +
 2. Polyethylene anti-rust fi+
 3. Polyethylene shrink film+
 lms

s","Since its establishment in 1933, the company has developed many of its o+
 wn products, and has made significant contributions to the wrapping and dist+
 ribution industries. The company continues to develop new items, not limite+
 d only to the field of wrapping films."

8168,"Asahi Chemical Co., Ltd.,"Asahi Kagaku Kogyo K.K.",,"Sumitomo Bldg.",+
 "Nigokan, 4-7-28, Kitahama","Chuo-ku","Osaka","541","06","06-220-8796","06-2+
 20-8799","2819 2891 2851",1948,40.,88,"Gakuji Sakai","President","Yukio Koni+
 shi","Overseas Dept. Manager",,"Sumitomo Bank, Iyo Bank","March, 1988",+

2095., "March, 1989", 2248., "March, 1990", 2345., "Tokyo Sales Office (Tokyo),", "+
"Seizosho (Osaka-shi), Hirakata Factory (Hirakata-shi), Tokushima Factory (A+
nan-shi), Yonago Factory (Saihaku-gun), Nichinan Factory (Nichinan-shi)", "La+
b. (Osaka-shi)", "Sumitomo Chemical Co., Ltd.", "-0-", "1. Acid corrosion inhib+
itor "IBIT"

2. High temperature-+
resistant inorganic adhesive and paint "Sumiceram S & P" 3. Liquid aluminu+
m sulphate 4. Polyaluminum +
chloride (liquid)", "Manufacture and sales of aluminum-based products, and va+
rious surface active agents, adhesives, and paints."

8064, "Asahipen Corporation", "K.K. Asahipen", "4623", "4-1-12, Tsurumi", "-0-", "+
Tsurumi-ku", "Osaka", "538", "6", "06-930-5001", "06-930-5032", "2851", 1947, 5402., +
335, "Hirofumi Tanaka", "President", "Hirofumi Tanaka", "President", "Sanwa Bank+
, Daiwa Bank, Sumitomo Bank, Bank of Osaka, Mitsubishi Bank, Mitsui Taiyo Ko+
be Bank, Tokai Bank", "September, 1988", 12759., "September, 1989", 15116., "Marc+
h, 1990", 8220., "Tokyo Head Office (Koto-ku), Osaka Branch (Osaka-shi), Senda+
i Branch (Sendai-shi), Saitama Branch (Fukaya-shi), Nagoya Branch (Komaki-sh+
i), Hiroshima Branch (Aki-gun, Hiroshima), Matsuyama Branch (Matsuyama-shi), +
Fukuoka Branch (Kasuya-gun)", "Hyogo Factory (Kato-gun)", "-0-", "-0-", "-0-", "+

1. Water-based paints

2. Synthetic resin-based paints

3. Lacquers", "Originally established in 1940 as Daiwa Toryo Kogyojo by for+
mer president Nakata Shichiro, and began manufacture and marketing of genera+
l-purpose paints. The company was renamed Asahi Paint K.K. in 1947 and bega+
n focusing on home-use paints in 1962. The name was changed to Asahipen Cor+
poration in 1965, and the company currently has 38 sales offices throughout +
Japan and has developed a substantial customer service network."

8877, "Dow Corning Toray Silicone Co., Ltd.", "Tore Dau Koningu Shirikon K.K.", +
, "Mitsui Bldg. No.6", "2-3-16, Nihombashi-Marunouchi", "Chuo-ku", "Tokyo", "103"+
, "3", "03-3246-1651", "03-3243-1577", "3089", 1966, 3600., 750, "Masami Morinaka", "+
President", "Masami Morinaka", "President", 1991/10/30, "Mitsui Taiyo Kobe Bank, +
Dai-Ichi Kangyo Bank, Sumitomo Bank, Mitsubishi Bank, Long Term Credit Bank+
of Japan, Industrial Bank of Japan, Mitsui Trust and Banking, CITI BANK", "N+
ovember, 1988", 28683., "November, 1989", 31037., "November, 1990", 34151., "Chib+
a Factory (Ichihara-shi), Fukui Factory (Sakai-gun, Fukui-ken)", "Main Lab. (+
Ichihara-shi)", "Dow Corning Corporation, Toray Co., Ltd.", "1. Silicone Prod+
ucts

2. Organo silic+
one products", "Originally established in Tokyo as Toray Silicone Co., Ltd. +
The company began importing Dow Corning's products in April of the following+
year, and changed its name to Toray Dow Corning Co., Ltd. in Decemner of 19+
89."

8065, "JSP Corporation", "K.K. JSP", "7942", "2-1-1, Uchisaiwai-cho", "-0-", "Chiy+
oda-ku", "Tokyo", "100", "3", "03-3503-6988", "03-3581-2476", "3086", 1962, 6513., +
618, "Masayo Uchiyama", "President", "Masayo Uchiyama", "President", "Long Term +
Credit Bank of Japan, Sumitomo Bank, Mitsubishi Trust & Banking Corp., Mitsut+
bishi Bank, Yokohama Bank, Ashikaga Bank, Tokyo Sowa Bank, Norinchukin Bank"+
, "March, 1988", 27749., "March, 1989", 31414., "March, 1990", 31638., "-0-", "Hokka+
ido Factory (Ebetsu-shi), Kanuma Factory (Kanuma-shi), Hiratsuka Factory (Hi+
ratsuka-shi), Kansai Factory (Ibo-gun, Hyogo), Kyushu Factory (Kamoto-gun, K+
umamoto)", "Kanuma Lab. (Kanuma-shi)", "Mitsubishi Gas Chemical Company, Inc." +
, "Nihon Zampakku K.K. (Tokyo), Seiboku Package K.K. (Chiba), JSP America Inc+
eets

boards

2. Foamed polystyrene b+

3. Polyolefins", "Since+

its establishment, the company has been involved in the development and industrial application of plastic foaming technologies. The company currently + handles high-performance, economical plastic products, concentrating on those produced using foaming technologies. The company use the advantageous properties of foamed materials to produce a wide range of products which include food containers, cushioning materials, agricultural materials, display materials, architectural insulating materials, automobile parts and sports equipment."

8066, "Osaka Sanso Kogyo, Ltd.", "Osaka Sanso Kogyo K.K.", "4089", "Sumitomo Seimei Shinosaka Kita Bldg.", "7th Floor, 1-14, Miyahara 4-chome", "Yodogawa-ku", + "Osaka", "532", "06", "06-396-3181", "06-396-3199", "2813", "1934, 4899., 673, "Masataka Tamura", "President", "Masataka Tamura", "President", "Industrial Bank of Japan, Nippon Credit Bank, Mitsubishi Bank, Toyo Trust and Banking Company, Mitsubishi Trust & Banking Corp., Yamaguchi Bank, Hiroshima Bank, Chugoku Bank, Sanwa Bank, Sumitomo Bank, Daiwa Bank, Sumitomo Trust and Banking, Mitsui + Taiyo Kobe Bank", "September, 1988", "41902.", "September, 1989", "46365.", "September, 1990", "51398.", "Tokyo Branch (Minato-ku), Nagoya Branch (Nagoya-shi), Kinki Branch (Amagasaki-shi), Chugoku Branch (Kurashiki-shi), Kyushu Branch (Kitakyushu-shi)", "Amagasaki Factory (Amagasaki-shi), Himeji-factory (Himeji-shi)", "-0-", "The B.O.C Group Plc.", "Daisan Gas Shoji (Amagasaki-shi), Bocho Daisan (Kudamatsu-shi, Yamaguchi-ken), Himeji Daisan (Himeji-shi), Fukuoka Daisan (Fukuoka-shi), A-tech (Akashi-shi), Kurosaki Sanso", "1. Oxygen +

2. Nitrogen +

3. Argon", "Leading +

manufacturer of industrial gases. Expanding supplies of absorptive gas generator, special gases for high-tech industries, oxygen, and nitrogen."

8067, "Union Sekiyu Kogyo Co., Ltd.", "Union Sekiyu Kogyo K.K.", "Dainidai Bldg.", "2-8-12, Nishishimbashi", "Minato-ku", "Tokyo", "105", "3", "03-3502-5211", "+ "03-3502-5215", "2951 2992 2869", "1947, 64., 124, "Gosuke Atsumi", "President", "Gosuke Atsumi", "President", "Sumitomo Bank, Tokai Bank", "March, 1988", "6447.", "March, 1989", "6262.", "March, 1990", "6256.", "-0-", "Iwakuni Refinery (Iwakuni-shi)", "+ "-0-", "Idemitsu Kosan Co., Ltd., Koa Oil Co., Ltd.", "-0-", "1. Naphthenic lubricant oils

2. Transformer oils

ils

3. Rubber processing oils

ssing oils

4. Liquid paraffin oils

ffin oils

5. Sodium bisulphite, naphthenic acid", "Formed as a subsidiary of Koa Oil Co., Ltd. to specialize in the production of lubrication oils, and received a capital infusion from Idemitsu Kyosan Co., Ltd. in 1975. Is a producer of various chemical products, and currently supplies lubricant oils and asphalt to Idemitsu, and fuel oil to both Idemitsu and Koa Oil. The company imports naphthene-based crude oil and refines it by vacuum and furfural distillation, and produces food-grade liquid paraffin through a sulphuric acid process. It also produces and sells sodium bisulphite and naphthenic acid."

END

END

USER NONE

SET DATE FORMAT "YY/MM/DD"

SET TIME FORMAT "HH:MM:SS"

SET DATE SEQUENCE YYMMDD

SET TIME SEQUENCE HHMMSS

SET QUOTES=NULL
 SET QUOTES="
 SET DELIMIT=NULL
 SET DELIMIT=","
 SET SEMI=NULL
 SET SEMI=";"
 SET PLUS=NULL
 SET PLUS="+"
 SET CASE OFF
 SET AUTOSKIP OFF
 SET REVERSE ON
 SET BELL OFF
 SET NULL " "
 SET DATE SEQUENCE MMDDYYYY
 SET TIME SEQUENCE HHMMSS
 SET CURRENCY "" PREFIX 0 B
 SET TOLERANCE 0.
 LOAD COCI
 8068,7,"Achilles Strengthening Vinylchloride Film Business in the US","Nihon+
 Keizai Shimbun/July 14, 1990, Saturday/page 10; COMLINE-CCH/page 6","July 1+
 7, 1990, Tuesday",11/11/1911
 8068,6,"Achilles Develops New Non-Contracting Polyvinyl Chloride Film","COML+
 INE-CCH/page 4","July 2, 1987, Thursday",11/11/1911
 8068,5,"Achilles Develops New Molding Compounds That Combine Heat Resistance+
 and Antistatic Properties","COMLINE-CCH/page 3","June 18, 1987, Thursday",+
 11/11/1911
 8068,4,"CHEMISTRY: Transparent PVC Film, Urethane Resin Hardeners, Lubricant+
 -Releasing Agent, Imitation Ceramic Wall Material","COMLINE-CNE/page 2","Mar+
 ch 24, 1987, Tuesday",11/11/1911
 8068,3,"Achilles Develops Antistatic, Fire Retardant, Transparent PVC Film",+
 "COMLINE-CCH/page 1","March 23, 1987, Monday",11/11/1911
 8068,2,"Achilles Introduces Easy-to-Use Desk Mat Film","COMLINE-CNE/page 4",+
 "July 25, 1986, Friday",11/11/1911
 8068,1,"Achilles Develops Insect Proof Vinyl Curtain","COMLINE-CNE/page 5",+
 June 30, 1986, Monday",11/11/1911
 8069,3,"Aicello Develops High Performance Photosensitive Film","Nikkei Sangy+
 o Shimbun/October 11, 1990, Thursday/page 14; COMLINE-CCH/page 4","October 1+
 8, 1990, Thursday",11/11/1911
 8069,2,"Aicello Chemical Develops New Biodegradable Film","Nikkei Sangyo Shi+
 mbun/December 15, 1989, Friday/page 4; COMLINE-CBI/page 1","December 18, 198+
 9, Monday",11/11/1911
 8069,1,"Film-Type Soap 100 Microns Thick","COMLINE-CNE/page 3","August 19, 1+
 986, Tuesday",11/11/1911
 8168,238,"Asahi Chemical Develops New Technique for Extruding PPS Resin","Ja+
 pan Industrial Journal/January 4, 1991, Friday/page 1; COMLINE-CIA/page 4",+
 January 8, 1991, Tuesday";11/11/1911
 8168,237,"Asahi Chemical Begins Operations at New Polypropylene Production F+
 acility","Nikkei Sangyo Shimbun/December 21, 1990, Friday/page 14; COMLINE-C+
 CH/page 5","December 28, 1990, Friday",11/11/1911
 8168,236,"Asahi Chemical Industry and Kowa to Launch Natural Human TPA Drug +
 Next Year","Nikkei Sangyo Shimbun/December 21, 1990, Friday/page 17; Nihon K+
 eizai Shimbun/December 20, 1990, Thursday, p.13; Yomiuri Shimbun, December 2+

0, 1990, Thursday/page 26; Asahi Shimbun (E)/December 20, 1990, Thursday/page 18; COMLINE-CBI/page 5", "December 25, 1990, Tuesday", 11/11/1911

8168,235,"Asahi Chemical Establishes Hollow Injection-Molding Technology", "Nikkan Kogyo Shimbun/December 4, 1990, Tuesday/page 17; Nikkei Sangyo Shimbun/December 4, 1990, Tuesday/page 13; COMLINE-CCH/page 2", "December 5, 1990, Wednesday", 11/11/1911

8168,234,"Asahi Chemical Synthesizes Highly Crystalline Polyacrylonitrile", "Japan Industrial Journal/December 3, 1990, Monday/page 17; COMLINE-CCH/page 1", "December 4, 1990, Tuesday", 11/11/1911

8064,1,"Asahipen To Expand into Cosmetics Business With Purchase of Teijin Papiilio Cosmetics", "COMLINE-CCH/page 6", "April 3, 1987, Friday", 11/11/1911

8455,31,"MITI to Conduct Organosilicon Materials Development Project", "Nihon Keizai Shimbun/July 14, 1989, Friday/page 5; COMLINE-CCH/page 1", "July 17, 1989, Monday", 11/11/1911

8455,30,"Nippon Sheet Glass Establishes Joint Venture in Japan for Hard Coating", "Nikkei Sangyo Shimbun/February 9, 1989, Thursday/page 20; Nikkan Kogyo Shimbun/February 9, 1989, Thursday/page 13; COMLINE-CCH/page 6", "February 10, 1989, Friday", 11/11/1911

8455,29,"Dow Corning Experiencing Brisk Sales of "Antifoam 90" Series", "Nippon Senshoku Shimbun COMLINE-CXE/page 1", "December 5, 1988, Monday", 11/11/1911

8455,28,"Gunze, Dow Corning to Collaborate in Developing and Marketing Artificial Skin Material", "Nikkan Kogyo Shimbun/November 2, 1988, Wednesday/page 1; COMLINE-CBI/page 1", "November 4, 1988, Friday", 11/11/1911

8455,27,"Dow Corning Begins Full-Scale Marketing of Silicone Rubber Bags for Medical Use", "Gomu Times/September 12, 1988, Monday/page 3; COMLINE-CXE/page 2", "September 19, 1988, Monday", 11/11/1911

8455,26,"Dow Corning Japan Marketing Device to Optimize Use of Tissue in Cosmetic Surgery", "Nikkei Sangyo Shimbun/August 30, 1988, Tuesday/page 13; COMLINE-CBI/page 4", "August 31, 1988, Wednesday", 11/11/1911

8455,25,"Silicon Chemical Research Society Established by Government, Industry, and Academia", "Sekiyu Kagaku Shimbun/August 1, 1988, Monday/page 1; COMLINE-CXE/page 1", "August 1, 1988, Monday", 11/11/1911

8455,24,"Dow Corning Marketing Silicone Rubber Catheter", "Nikkei Sangyo Shimbun/July 8, 1988, Friday/page 24; COMLINE-CBI/page 6", "July 11, 1988, Monday", 11/11/1911

8455,23,"GE and UCC to Consolidate Silicone Business, Forming World's Second Largest Silicone Power", "Gomu Hochi Shimbun/June 13, 1988, Monday/page 12; COMLINE-CXE/page 1", "June 13, 1988, Monday", 11/11/1911

8455,22,"Moves in the Silicone Industry, Entering New Era of Growth and Internationalization", "Gomu Hochi Shimbun/June 13, 1988, Monday/page 1; COMLINE-CXE/page 2", "June 13, 1988, Monday", 11/11/1911

8455,21,"Trends in the Silicone Market", "Japan Industrial Journal/June 9, 1988, Thursday/page 9; COMLINE-CXE/page 4", "June 6, 1988, Monday", 11/11/1911

8455,20,"Toray Silicone Actively Conducting New Product Development, Markets Ultra-Fine Silicone Powders", "Gomu Times/May 16, 1988, Monday/page 4; COMLINE-CXE/page 1", "May 23, 1988, Monday", 11/11/1911

8455,19,"Toshiba Silicone Establishes Joint Venture in Korea", "Gomu Times/May 16, 1988, Monday/page 1; COMLINE-CXE/page 2", "May 23, 1988, Monday", 11/11/1911

8455,18,"Toray Silicone Strengthening User-Oriented Marketing Activity", "Gomu Hochi Shimbun/April 11, 1988, Monday/page 9; COMLINE-CXE/page 3", "May 20, 1988, Monday", 11/11/1911

1988, Friday",11/11/1911

8455,17,"Silicone Rubber Increasing in Demand, New Applications Development + Needed","Gomu Times/May 16, 1988, Monday/page 4; COMLINE-CXE/page 2","May 16+ , 1988, Monday",11/11/1911

8455,16,"Toshiba Silicone Cooperates with US GE to Advance into Korea","Gomu+ Hoshi Shimbun/May 16, 1988, Monday/page 10; COMLINE-CXE/page 3","May 16, 19+ 88, Monday",11/11/1911

8455,15,"Interview with Hirofumi Miyashita, Manager of Tokyo No.2 Sales Dept+ MLINE-CXE/page 1","May 2, 1988, Monday",11/11/1911

8455,14,"Dow Corning to Invest in Sumitomo Chemical's PC Resin Subsidiary", "+ Nihon Keizai Shimbun/April 23, 1988, Saturday/page 8; Japan Industrial Journ+ al/April 23, 1988, Saturday/page 3; Nikkei Sangyo Shimbun/April 23, 1988, Sa+ turday/page 7; Nikkan Kogyo Shimbun/April 23, 19", "April 26, 1988, Tuesday", + 11/11/1911

8455,13,"Silicone Rubber Production Accelerating","Gomu Hoshin Shimbun/April+ 11, 1988, Monday/page 1; COMLINE-CXE/page 4", "April 25, 1988, Monday", + 11/11/1911

8455,12,"US Dow Corning to Construct Basic Research Center for Silicon-Relat+ ed Materials","Japan Industrial Journal/February 22, 1988, Monday/page 14; C+ OMLINE-CXE/page 8", "February 29, 1988, Monday", 11/11/1911

8455,11,"Silicon Chemistry: Outstanding Polymer Research","Nikkan Kogyo Shim+ bun/January 21, 1988, Thursday/page 5; COMLINE-CXE/page 1", "February 8, 1988+ , Monday", 11/11/1911

8455,10,"Dow Corning Markets Silicone-Based Resin-Modifying Pellets","Chemic+ al Industry/January 26, 1988, Tuesday/page 8; COMLINE-CXE/page 6", "February + 1, 1988, Monday", 11/11/1911

8455,9,"Dow Corning Japan Markets Granular Plastics Modifier","Nikkei Sangyo+ Shimbun/January 22, 1988, Friday/page 21; COMLINE-CXE/page 7", "January 25, + 1988, Monday", 11/11/1911

8455,8,"Coupling Agents","Chemical Daily/December 9, 1987, Wednesday COMLINE+ -CXE/page 1", "January 4, 1988, Monday", 11/11/1911

8455,7,"A Review of the Japanese Plastics Industry in 1987 -- Silicone","Pla+ stics '87 (COMLINE Silicone File) COMLINE-CXE/page 3", "December 21, 1987, Mo+ nday", 11/11/1911

8455,6,"Toray Silicone Develops New Type of Silicone Adhesive","COMLINE-CCH/+ page 2", "November 24, 1987, Tuesday", 11/11/1911

8455,5,"Toray Silicone Markets SGS Sealing Material and Other New Products", + "Chemical Daily/July 20, 1987, Monday COMLINE-CXE/page 1", "August 24, 1987, + Monday", 11/11/1911

8455,4,"Dow Corning Developing Products for Use in the Medical Field","Chemi+ cal Daily/July 20, 1987, Monday COMLINE-CXE/page 2", "August 24, 1987, Monday+ ", 11/11/1911

8065,6,"JSP to Begin Production of Car Bumper Material Next Year","Nikkei Sa+ ngyo Shimbun/November 16, 1990, Friday/page 14; COMLINE-CCH/page 3", "Novembet+ r 19, 1990, Monday", 11/11/1911

8065,5,"JSP to Begin Full-Scale Marketing of Recycled Foam-Plastic Products", + "Nikkei Sangyo Shimbun/November 15, 1990, Thursday/page 10; COMLINE-CCH/pag+ e 5", "November 16, 1990, Friday", 11/11/1911

8065,4,"JSP Develops Foam Expansion Technology Using No CFCs","Nikkei Sangyo+ Shimbun/September 6, 1990, Thursday/page 2; Nikkan Kogyo Shimbun/September + 6, 1990, Thursday/page 15; COMLINE-CCH/page 2", "September 7, 1990, Friday", + 11/11/1911

8065,3,"JSP to Produce Polystyrene-Foam Sheet in Malaysia","Nikkei Sangyo Shimbun/August 8, 1990, Wednesday/page 12; COMLINE-CCH/page 4","August 9, 1990+, Thursday",11/11/1911

8065,2,"JSA to Begin Full Operation of Standards Database Service","Nikkei New Media/April 10, 1989, Monday/page 4; COMLINE-CTE/page 4","April 12, 1989, Wednesday",11/11/1911

8065,1,"Waste Plastics Disposer Uses Steam","COMLINE-CNE/page 1","July 28, 1986, Monday",11/11/1911

8066,8,"Osaka Sanso, BOC Group to Unify Semiconductor Gas Business","Nikkan Kogyo Shimbun/November 20, 1990, Tuesday/page 19; COMLINE-CCH/page 3","November 21, 1990, Wednesday",11/11/1911

8066,7,"Osaka Sanso and BOC Group to Develop Gases for Semiconductor Industry","Nikkei Sangyo Shimbun/October 19, 1990, Friday/page 15; COMLINE-CCH/page 2","October 22, 1990, Monday",11/11/1911

8066,6,"Osaka Sanso Kogyo Markets New Metal Die Cooling System and Compact Burr Remover","Japan Industrial Journal/November 15, 1988, Tuesday/page 8; COMLINE-CIA/page 5","November 16, 1988, Wednesday",11/11/1911

8066,5,"Osaka Sanso to Market High-Purity Gases","Nikkei Sangyo Shimbun/August 5, 1988, Friday/page 19; Nikkan Kogyo Shimbun/August 5, 1988, Friday/page 13; COMLINE-CCH/page 1","August 8, 1988, Monday",11/11/1911

8066,4,"Osaka Sanso Develops Ultra-Low-Temperature Dew-Point Meter for Measuring Trace Amounts of Water in Gases","Nikkan Kogyo Shimbun/August 1, 1988, Monday/page 20; COMLINE-CCH/page 4","August 2, 1988, Tuesday",11/11/1911

8066,3,"Osaka Sanso Develops Silicon Sensor","COMLINE-CCH/page 2","October 15, 1987, Thursday",11/11/1911

8066,2,"Quantitative Analytical Method Developed for In-Furnace Determination of Impurities in Molten Steel","COMLINE-CCH/page 4","April 8, 1987, Wednesday",11/11/1911

8066,1,"Osaka Sanso Kogyo Develops Automatic Semiconductor Gas Supply System","COMLINE-CCH/page 5","September 26, 1986, Friday",11/11/1911

8067,143,"Ube Industries, Three Chemical Companies to Establish Joint Venture for Polypropylene Production","COMLINE-CCH/page 6","November 26, 1990, Monday",11/11/1911

8067,142,"Ube Industries and Three Chemical Companies to Establish Joint Venture for Polypropylene Production","COMLINE-CTR/page 6","November 26, 1990, Monday",11/11/1911

8067,141,"Mitsubishi to Invest in UCAR","Nikkei Sangyo Shimbun/November 21, 1990, Wednesday/page 16; Nihon Keizai Shimbun/November 21, 1990, Wednesday/page 12; Nikkan Kogyo Shimbun/November 22, 1990, Thursday/page 1; COMLINE-CCH/page 3","November 22, 1990, Thursday",11/11/1911

8067,140,"Mitsui to Increase Imports of Machine Tools From Eastern Europe","Nikkan Kogyo Shimbun/November 16, 1990, Friday/page 10; COMLINE-CIA/page 1","November 19, 1990, Monday",11/11/1911

8067,139,"Mitsui Establishes Joint Venture in US for Production of Ethylene Glycol","Nihon Keizai Shimbun/November 7, 1990, Wednesday/page 13; Nikkan Kogyo Shimbun/November 7, 1990, Wednesday/page 1; COMLINE-CCH/page 3","November 8, 1990, Thursday",11/11/1911

8067,138,"Sharp's 1990 Exports to Soviet Union and Eastern Europe to Double","Nihon Keizai Shimbun/October 27, 1990, Saturday/page 10; COMLINE-CEL/page 6","October 30, 1990, Tuesday",11/11/1911

8067,137,"Sanyo Electric to Set Up Electric Appliance Showrooms in Soviet Union","Nikkei Sangyo Shimbun/October 23, 1990, Tuesday/page 9; COMLINE-CEL/page 6",11/11/1911

ge 6", "October 25, 1990, Thursday", 11/11/1911

8067,136, "Japan, USSR to Set Up Aluminum Recycling Firm", "Nihon Keizai Shimbun/October 11, 1990, Thursday/page 9; COMLINE-CCH/page 4", "October 12, 1990, + Friday", 11/11/1911

8067,135, "Honda Considering Supplying Motorbike Production Technology to USSR and Poland", "Nihon Keizai Shimbun/September 23, 1990, Sunday/page 1; COMLINE-CTR/page 5", "September 26, 1990, Wednesday", 11/11/1911

8067,134, "Uyemura Delivers PCB Plating Plant to Cuba", "Nikkei Sangyo Shimbun/September 18, 1990, Tuesday/page 2; COMLINE-CEL/page 5", "September 18, 1990 + , Tuesday", 11/11/1911

8067,133, "MPT to Grant RPOA Status to International VAN Companies", "Japan Industrial Journal/August 31, 1990, Friday/page 11; COMLINE-CTE/page 1", "September 3, 1990, Monday", 11/11/1911

8067,132, "Casio to Increase Marketing Activities in East Europe", "Dempa Shimbun/August 18, 1990, Saturday/page 5; COMLINE-CEL/page 3", "August 21, 1990, + Tuesday", 11/11/1911

8067,131, "Matsushita Exports Electrical Components to USSR", "Nihon Keizai Shimbun/August 18, 1990, Saturday/page 8; COMLINE-CEL/page 5", "August 21, 1990 + , Tuesday", 11/11/1911

8067,130, "Three Bond, Union Carbide to Conduct Coating Business in Japan", "Nikkan Kogyo Shimbun/August 8, 1990, Wednesday/page 20; COMLINE-CCH/page 3", " + August 9, 1990, Thursday", 11/11/1911

8067,129, "IBM Japan Transferring Production Technology", "COMLINE-CCO/page 5" + , "August 8, 1990, Wednesday", 11/11/1911

8067,128, "Fukuda Denshi Receives Order Exceeding 2 Billion Yen from Soviet Union", "Nikkei Sangyo Shimbun/August 5, 1990, Sunday/page 5; COMLINE-CBI/page + 7", "August 6, 1990, Monday", 11/11/1911

8067,127, "Union Tool Targeting Five-Fold Increase in Machine Tool Sales in Five Years", "Nikkei Sangyo Shimbun/August 1, 1990, Wednesday/page 11; COMLINE + -CIA/page 6", "August 2, 1990, Thursday", 11/11/1911

8067,126, "Union Tool to Set Up Plant in Taiwan to Produce Drills for Use in + PCB Production", "Nikkan Kogyo Shimbun/July 30, 1990, Monday/page 13; COMLINE + -CIA/page 3", "July 31, 1990, Tuesday", 11/11/1911

8067,125, "Nissan to Open Service Centers in Soviet Union", "Nikkan Jidosha Shimbun/July 19, 1990, Thursday/page 1; COMLINE-CTR/page 5", "July 20, 1990, Fr + iday", 11/11/1911

8067,124, "Mitsui Bussan to Step Up Machine Tool Imports", "Nikkan Kogyo Shimbun/July 16, 1990, Monday/page 12; Japan Industrial Journal/July 16, 1990, Mo + nday/page 12; COMLINE-CIA/page 1", "July 17, 1990, Tuesday", 11/11/1911

8067,123, "Mitsubishi Petrochemical to Supply Polyethylene Technology to Union Carbide", "Nihon Keizai Shimbun/July 10, 1990, Tuesday/page 10; Nikkei Sangyo Shimbun/July 10, 1990, Tuesday/page 13; Japan Industrial Journal/July 10, + 1990, Tuesday/page 14; Nikkan Kogyo Shimbun/July 10, 1990, ", "July 11, 1990, + Wednesday", 11/11/1911

8067,122, "Teikoku Seiyaku to Export Poultry Preparations to Soviet Union", " + Nikkei Sangyo Shimbun/June 23, 1990, Saturday/page 1; COMLINE-CBI/page 3", "J + une 25, 1990, Monday", 11/11/1911

8067,121, "MHI and Mitsubishi Receive Order for Forklifts from Soviet Union", " + Nikkei Sangyo Shimbun/June 22, 1990, Friday/page 10; COMLINE-CIA/page 2", "J + une 25, 1990, Monday", 11/11/1911

8067,120, "Fujisawa Pharmaceutical to Run Clinical Trials of Immunosuppressant + t in Soviet Union", "Nikkei Sangyo Shimbun/June 20, 1990, Wednesday/page 1; C +

OMLINE-CBI/page 1", "June 21, 1990, Thursday", 11/11/1911
8067,119,"JAPEx and Osaka Gas Acquire Gas/Oil Mining Rights in East Kalimantan", "COMLINE-CCH/page 6", "June 20, 1990, Wednesday", 11/11/1911
8067,118,"Fanuc's Soviet Joint Venture to Begin Operations", "Nikkei Sangyo Shimbun/June 18, 1990, Monday/page 13; COMLINE-CIA/page 1", "June 19, 1990, Tuesday", 11/11/1911
8067,117,"Daimler-Benz Requests Cooperation From Mitsubishi", "Nikkan Kogyo Shimbun/May 23, 1990, Wednesday/page 1; Nikkei Sangyo Shimbun/May 23, 1990, Wednesday/page 2; Nihon Keizai Shimbun/May 23, 1990, Wednesday/page 1; Japan + Industrial Journal/May 23, 1990, W", "May 24, 1990, Thursday", 11/11/1911
8067,116,"Toyo Engineering Expecting Orders Worth 200 Billion Yen in Fiscal + 1990", "Nikkan Kogyo Shimbun/May 18, 1990, Friday/page 12; COMLINE-CIA/page 5+", "May 21, 1990, Monday", 11/11/1911
END
USER NONE
SET DATE FORMAT "MM/DD/YY"
SET TIME FORMAT "HH:MM:SS"
SET DATE SEQUENCE MMDDYY
SET TIME SEQUENCE HHMMSS

SET QUOTES=NULL
 SET QUOTES="
 SET DELIMIT=NULL
 SET DELIMIT=","
 SET SEMI=NULL
 SET SEMI=";"
 SET PLUS=NULL
 SET PLUS="+"
 SET CASE OFF
 SET AUTOSKIP OFF
 SET REVERSE ON
 SET BELL OFF
 SET NULL " "
 SET DATE SEQUENCE YYYYMMDD
 SET TIME SEQUENCE HHMMSS
 SET CURRENCY "" PREFIX 0 B
 SET TOLERANCE 0.
 LOAD CPNY

1015,"Biosensor Laboratories Co., Ltd.,"K.K. Baiosensa Kenkyujo",,"Chugai P+
 harmaceutical Co., Ltd.,"3-41-8, Takada","Toshima-ku","Tokyo","171","3","03+
 -3987-7111","03-3980-0959","3841",1988,917.,32,"Toshiaki Yamaguchi","Preside+
 nt","Yoshiaki Yamaguchi","President",1991/01/24,,"March, 1988",0.,,"March, 19+
 89",0.,,"March, 1990",0.,,,"BS Lab Kuraray (Kurashiki-shi), BS Lab Tosoh (Aya+
 se-shi), BS Lab HPK (Hamakita-shi)","Chugai Pharmaceutical Co., Ltd., Kurara+
 y Co., Ltd., Tosoh Corp., Hamamatsu Photonics K.K.",,,"The company is conduc+
 ting R&D on biosensors for medical use."

1007,"Jujo Paper Co., Ltd.,"Jujo Seishi K.K.,"3863","Shin-Yurakucho Bldg."+
 ,"1-12-1, Yuraku-cho","Chiyoda-ku","Tokyo","100","3","03-3211-7311","03-3216+
 -4753","2621 0811 0831",1949,42791.,4400,"Takeshiro Miyashita","President","+
 Hideo Yokota","Director, Overseas Dept.",1991/01/24,"Mitsui Bank","March, 19+
 88",342619.,,"March, 1989",366884.,,"March, 1990",393514.,,"Fushiki Mill (Fush+
 iki-shi), Miyakijima Mill (Osaka-shi), Yatsushiro Mill (Yatsushiro-shi), Ish+
 inomaki Mill (Ishinomaki-shi), Kushiro Mill (Kushiro-shi), Nakoso Mill (Iwak+
 i-shi)","Central Laboratory (Kita-ku)",,"Jujo Paperboard Co., Ltd. (Chuo-ku)+
 , Jujo Kimberly Co., Ltd. (Chuo-ku), Jujo Lumber Co., Ltd. (Chuo-ku), Jujo K+
 enzai Co., Ltd. (Takaoka-shi), Shikoku Coca-cola Bottling Co., Ltd. (Takamat+
 su-shi), Jujo Central Co., Ltd. (Shinjuku-ku, Tokyo), Jujo Kaihatsu Co., Ltd+

2. Printing paper

3. OA paper,"Japan's third largest paper manufacture+
 r, with a market share of 6.6%. One of the company's strengths is its broad+
 range of product lines."

1009,"Miura Mericlone Ltd.,"Miura Merikuron Yugen Kaisha",,"1331, Nishitomi+
 oka",,"Isehara-shi","Kanagawa-ken","259-11","463","0463-95-4730","0463-95-47+
 71","0161 0181",1971,100.,20,"Jiro Miura","President","Jiro Miura","President+
 t",1991/01/24,,"August, 1989",2600.,,,"Bio Research Laboratory (Isehara+
 shi)",,,"The company manufactures horticultural seedlings such as mini-catt+
 leya, using biotech methods including tissue culture."

1014,"Mizuho Medy Co., Ltd.,"K.K. Mizuho Medy",,"5-4, Fujinoki-machi",,"Tos+
 u-shi","Saga-ken","841","942","0942-85-0303","0942-85-0307","2835 2836 3841"+
 ,1977,95.,99,"Fuminari Karakawa","President","Hioto Noda","Manager, Marketi+
 ng and Planning Dept.",1991/01/24,"Sanwa Bank","December, 1988",978.,,"Decemb+
 er, 1989",1225.,,"December, 1990",,"Main Marketing Office (Fukuoka-shi), Toky+

o Office (Taito-ku), Nagoya Office (Nagoya-shi), Osaka Office (Osaka-shi), S+
hikoku Office (Matsuyama-shi)", "Factory (Tosu-shi)", "Laboratory (Tosu-shi)", +
,, "1. Immunological reagents +
2. Reagents for automatic analyzing equipment +
3. Reagent kits for manual testing +
4. Animal sera and antibodies for cultures", "In addition to manufactur+
ing and marketing reagents for use in various analytical and diagnostic test+
s, the company also imports and markets polychronal antibodies and animal se+
ra, and provides scientific and technological services relating to the above+
1010, "Nippon Centocor K.K.", "Nippon Sentokoa K.K.", "Landmark Shiba-Koen Blg+
-9077", "2834 2835 2836", 1987,, "Yasuhiro Takahashi", "President", "Yasuhiro Ta+
kahashi", "President", 1991/01/24,,,,,, "Centocor, Inc. (U.S.)", "1. "HA-+
1A" 2. "+
Centorex" 3.+
"Panorex""", "The company imports and markets pharmaceuticals and diagnosti+
cs."
1000, "Sakata Seed Corp.", "K.K. Sakata no Tane", "1377", "3-1-7, Nagata-higashi+
", "Minami-ku", "Yokohama-shi", "Kanagawa-ken", "232", "45", "045-715-2111", "045-7+
12-1775", "181", 1913, 13500., 560, "Zenichiro Kaneko", "President", "Junichi Obara+
", "Director, President's Office", 1991/01/20, "Dai-ichi Kangyo Bank, others", "+
May, 1988", 25200., "May, 1989", 27600., "May, 1990", 30000., "Hazawa Distribution+
Center (Yokohama-shi, Kanagawa Pref.)", "Kimitsu Breeding Station (Kimitsu-g+
un), Misato Breeding Station (Minami Azumi-gun, Nagano Pref.)", "Plant Biotech+
hnology Center (Kimitsu-gun), Kakegawa Research Center (Kakegawa-shi, Shizuoka
ka Pref.)", "Sakata Seed America Inc. (California, U.S.), Sakata Seed Europe+
B.V. (Hoofddorp, Holland)", "1. Vegetable and flower seeds +
2. Horticultural supplies +
3. Plants, seedlings", "The company, which mai+
ntains an abundant selection of F1 dominant strains, has a good reputation f+
or supply in Europe and the U.S. of flowering plants such as pansies and pri+
mroses. In Japan, the company is a top supplier of melon, spinach, and corn+
seeds."
1004, "Taiho Pharmaceutical Co., Ltd.", "Taiho Yakuhin Kogyo K.K.", "1-27, Kant+
danishiki-cho", "Chiyoda-ku", "Tokyo", "101", "3", "03-3294-4527", "03-3233-4057"+
", "2834", 1963, 200., 1939, "Yukio Kobayashi", "President", "The Manager", "Internat+
ional R&D Operation Dept.", 1991/01/24, "Daiwa Bank", "June, 1988", 67700., "June+
", 1989, 68500., "June, 1990", 70200., "Tokushima Manufacturing Plant (Tokushim+
a-shi)", "Cancer Research Lab. (Hanno-shi), Immunological & Cardiovascular Re+
search Lab. (Hanno-shi), Pathogenic Bio-chemistry Lab. (Hanno-shi), Biologic+
al Research Lab. (Tokushima-shi), Drug Safety Research Lab. (Tokushima-shi),+
Pharmaceutical Research Lab. (Tokushima-shi), O.T.C. Product Research Lab. +
(Tokushima-shi)", "Kotai Kasei Kogyo K.K. (Kodama-gun), Shinsen Iyaku K.K. (+
Bizen-shi), Taiho Alberta Ltd. (Alberta, Canada)", "1. Anti-cancer drug "UFT"+
" 2. Anti-cancer drug "+
Futraful" 3. Nutrition drink +
"Tiovita Drink""", "Conducting pharmaceutical-related activities ranging fro+
m R&D to manufacturing and marketing. The company, an affiliate of the Otsu+
ka group, is one of the top manufacturers of anticancer drugs, and has also +
been successful with its OTC drug businesses (particularly nutrition drinks)+
1037, "Snow Brand Milk Products Co., Ltd.", "Yukijirushi Nyugyo K. K.", "2262", +
"13, Honshio-cho", "Shinjuku-ku", "Tokyo", "160", "03", "03-3226-2148", "03-3226-+
2106", "2020 0110 0241", 1190, 26450., 8100, "Katsuya Shono", "President", "Katsuya+

Shono", "President", 1991/02/01,, "March, 1989", 4760.,,,"Bioscience Research Laboratory (Shimitsuga-gun), Technical Laboratory (Kawagoe-shi)",,, "1. Milk
2. Dairy products
3. +
Ice cream", "Known as one of Japan's largest manufacturers of dairy products +
(butter and cheese), and is the leading producer of drinking milk. The company
also has an aggressive research campaign in agricultural biotech, cattle +
embryo transfer, and high-yield seeds."

END

USER NONE

SET DATE FORMAT "YY/MM/DD"

SET TIME FORMAT "HH:MM:SS"

SET DATE SEQUENCE YYMMDD

SET TIME SEQUENCE HHMMSS

SET QUOTES=NULL

SET QUOTES="

SET DELIMIT=NULL

SET DELIMIT=", "

SET SEMI=NULL

SET SEMI="; "

SET PLUS=NULL

SET PLUS="+ "

SET CASE OFF

SET AUTOSKIP OFF

SET REVERSE ON

SET BELL OFF

SET NULL " "

SET DATE SEQUENCE MMDDYYYY

SET TIME SEQUENCE HHMMSS

SET CURRENCY " PREFIX 0 B

SET TOLERANCE 0.

LOAD COCI

1007,5,"Jujo Paper Begins Biotechnology-Based Flower Business","Nikkei Sangyo Shimbun/June 15, 1990, Friday/page 1; COMLINE-CBI/page 3","June 18, 1990, + Monday",11/11/1911

1007,4,"Novo Nordisk Preparing for Collaboration with Jujo Paper in Enzyme Development","Japan Industrial Journal/June 1, 1990, Friday/page 16; Nikkan Kogyo Shimbun/June 1, 1990, Friday/page 21; COMLINE-CBI/page 2","June 4, 1990+ , Monday",11/11/1911

1007,3,"Jujo Paper to Establish Subsidiary in West Germany for Production, Marketing of Thermal Paper","Japan Industrial Journal/April 11, 1990, Wednesday/page 1; COMLINE-CCH/page 3","April 12, 1990, Thursday",11/11/1911

1007,2,"Jujo Paper Develops Enzyme Technology to Remove Wood Pitch","Nikkan + Kogyo Shimbun/March 23, 1990, Friday/page 14; Nikkei Sangyo Shimbun/March 23+ , 1990, Friday/page 17; COMLINE-CCH/page 1","March 26, 1990, Monday",+ 11/11/1911

1007,1,"Jujo Paper and Finnish Firm to Cooperate on Production of Heat-Sensitive Paper","Nihon Keizai Shimbun/October 14, 1989, Saturday/page 9; Japan Industrial Journal/October 14, 1989, Saturday/page 1; COMLINE-CCH/page 5","October 17, 1989, Tuesday",11/11/1911

1000,5,"Sakata Seed to Establish New Plant Breeding Facilities in US","Nikkan Kogyo Shimbun/December 4, 1989, Monday/page 17; COMLINE-CBI/page 1","December 5, 1989, Tuesday",11/11/1911

1000,4,"Sakata Seed Buys Site in Yamagata Prefecture for Use in Seed Breeding Studies","Nikkei Sangyo Shimbun/November 22, 1989, Wednesday/page 17; COMLINE-CBI/page 5","November 24, 1989, Friday",11/11/1911

1000,3,"Sakata Seed to Market Seeds for 15 Types of Edible Flowers","Nikkan + Kogyo Shimbun/July 11, 1989, Tuesday/page 12; COMLINE-CBI/page 5","July 12, + 1989, Wednesday",11/11/1911

1000,2,"Sakata Seed to Establish New Experimental Seedling Farm","Japan Industrial Journal/June 16, 1989, Friday/page 16; COMLINE-CBI/page 5","June 19, + 1989, Monday",11/11/1911

1000,1,"Sakata Seed Using Cell Fusion Techniques to Develop Disease-Resistant Eggplant Strains","Nikkei Sangyo Shimbun/November 30, 1988, Wednesday/page+ 19; COMLINE-CBI/page 4","December 1, 1988, Thursday",11/11/1911

1004,5,"Taiho Pharmaceutical Acquires Shinzen Pharmaceutical","Nikkei Sangyo+

Shimbun/October 16, 1990, Tuesday/page 16; Nihon Keizai Shimbun/October 16,+
1990, Tuesday/page 13; COMLINE-CBI/page 2", "October 17, 1990, Wednesday", +
11/11/1911

1004,4,"Taiho Pharmaceutical Completes Construction of New Drug Development +
Center in Saitama Prefecture", "Nikkei Sangyo Shimbun/October 3, 1990, Wednes+
day/page 21; COMLINE-CBI/page 5", "October 4, 1990, Thursday", 11/11/1911

1004,3,"Taiho Pharmaceutical to Market New Cephem Antibiotic", "Nikkei Sangyo+
Shimbun/June 27, 1990, Wednesday/page 21; COMLINE-CBI/page 6", "June 29, 199+
0, Friday", 11/11/1911

1004,2,"Taiho Pharmaceutical to Commercialize Drugs from East Europe", "Nihon+
Keizai Shimbun/April 1, 1990, Sunday/page 5; COMLINE-CBI/page 4", "April 3, +
1990, Tuesday", 11/11/1911

1004,1,"Taiho Pharmaceutical to Begin Clinical Trials on Antibiotic", "Nikkei+
Sangyo Shimbun/March 23, 1990, Friday/page 19; COMLINE-CBI/page 4", "March 2+
6, 1990, Monday", 11/11/1911

1037,8,"Bioreactor Developed for Continuous Dissociation of Casein", "Nikkan +
Kogyo Shimbun/December 10, 1990, Monday/page 19; COMLINE-CBI/page 1", "Decemb+
er 11, 1990, Tuesday", 11/11/1911

1037,7,"Snow Brand Milk Products to Collaborate With US Firm in Development +
of Immunosuppressant", "Nikkei Sangyo Shimbun/October 17, 1990, Wednesday/pag+
e 17; Nikkan Kogyo Shimbun/October 17, 1990, Wednesday/page 19; Japan Indust+
rial Journal/October 17, 1990, Wednesday/page 13; COMLINE-CBI/page 6", "Octob+
er 18, 1990, Thursday", 11/11/1911

1037,6,"Snow Brand Milk Products Develops Sensor to Monitor Viscosity of Mic+
robial Culture Fluid", "Nikkei Sangyo Shimbun/September 5, 1990, Wednesday/pa+
ge 5; COMLINE-CBI/page 5", "September 7, 1990, Friday", 11/11/1911

1037,5,"Snow Brand Milk, Netsushin Develop Resistance Bulb Thermometer for H+
igh-Temperature Measurement in Food Industry", "Nikkei Sangyo Shimbun/August +
31, 1990, Friday/page 15; Nikkan Kogyo Shimbun/August 31, 1990, Friday/page +
12; COMLINE-CBI/page 4", "September 3, 1990, Monday", 11/11/1911

1037,4,"Snow Brand Milk Products to Supply INRA with Manufacturing Technolog+
y for Fluid Viscosity Sensor", "Nikkei Sangyo Shimbun/August 1, 1990, Wednesd+
ay/page 1; COMLINE-CBI/page 2", "August 2, 1990, Thursday", 11/11/1911

1037,3,"Snow Brand Milk, Otsuka Pharmaceutical to Collaborate in Clinical Tr+
ials, Marketing of Enteral Hyperalimentation Solution", "Nikkei Sangyo Shimbun+
n/July 10, 1990, Tuesday/page 19; COMLINE-CBI/page 1", "July 11, 1990, Wednes+
day", 11/11/1911

1037,2,"Snow Brand Milk Products Establishing String of Subsidiaries Oversea+
s", "Nikkei Sangyo Shimbun/June 25, 1990, Monday/page 19; COMLINE-CBI/page 2"+
, "June 26, 1990, Tuesday", 11/11/1911

1037,1,"Snow Brand Milk Products, Fuji Spinning Isolate Lactoferrin from Mil+
k", "Nikkei Sangyo Shimbun/April 17, 1990, Tuesday/page 1; COMLINE-CBI/page 2+
, "April 18, 1990, Wednesday", 11/11/1911

END

USER NONE

SET DATE FORMAT "MM/DD/YY"

SET TIME FORMAT "HH:MM:SS"

SET DATE SEQUENCE MMDDYY

SET TIME SEQUENCE HHMMSS

資料 III : データベースアウトプットサンプル

Achilles Corporation
Akiresu K.K.
TSE #: 5142

Address/Telephone:

22-5, Daikyo-cho
Shinjuku-ku, Tokyo 160
Tel: 03-341-5111, Fax: 03-355-3274

Business Description:

Main Products:

1. Footwear
2. Plastic Products
3. Industrial Materials

Has a leading market share of about 20% in casual and children's shoes. Expanding into industrial materials such as PVC films, artificial leather, new building materials, and water processing equipment. Also has a PVC vinyl film production line in the US, operated by local concern Achilles USA. Starting production of semi-hard transparent vinyl.

SIC Code(s): 3021, 3081, 2295, 3714

Chief Exec. Officer: Masao Tonooka, President

Contact: Sadao Nakajima, Vice President

Established: 1947

Capital: ¥14,627 million

Revenue:	March, 1988	¥37,363 million
	March, 1989	¥101,632 million
	March, 1990	¥108,809 million

Banks: Fuji Bank, Tokai Bank, Mitsui Taiyo Kobe Bank,
Yasuda Trust and Banking Company, Ashikaga Bank

Branches: Kansai Branch (Osaka-shi), Hokkaido Branch
(Ishikara-gun), Joto Branch (Arakawa-ku, Tokyo),
Kyushu Branch (Fukuoka-shi)

Factories: Yamabe Factory (Ashikaga-shi), Nishinomiya
Factory (Ashikaga-shi), Mikuriya Factory (Ashikaga-shi),
Shiga First Factory (Nosu-gun), Shiga Second Factory
(Okami-gun), Miuta Factory (Miuta-shi, Hokkaido),
Kyushu Factory (Kaho-gun, Fukuoka-ken)

Laboratories:

Parent Co(s):

Subsidiaries:

News Citations:

TITLE: Achilles Strengthening Vinylchloride Film Business in the US
REFR: Nihon Keizai Shimbun, July 14, 1990 (Sat.), p.10;
COMLINE-CCH, p.6
LOAD:

TITLE: Achilles Develops New Non-Contracting Polyvinyl Chloride
Film
REFR: COMLINE-CCH, p.4
LOAD: July 2, 1987 (Thurs.)

TITLE: Achilles Develops New Molding Compounds That Combine
Heat Resistance and Antistatic Properties
REFR: COMLINE-CCH, p.3
LOAD: June 18, 1987 (Thurs.)

TITLE: CHEMISTRY: Transparent PVC Film, Urethane Resin
Hardeners, Lubricant-Releasing Agent, Imitation Ceramic
Wall Material
REFR: COMLINE-CNE, p.2
LOAD: March 24, 1987 (Tues.)

TITLE: Achilles Develops Antistatic, Fire Retardant, Transparent
PVC Film
REFR: COMLINE-CCH, p.1
LOAD: March 23, 1987 (Mon.)

TITLE: Achilles Introduces Easy-to-Use Desk Mat Film
REFR: COMLINE-CNE, p.4
LOAD: July 25, 1988 (Fri.)

TITLE: Achilles Develops Insect Proof Vinyl Curtain
REFR: COMLINE-CNE, p.5
LOAD: June 30, 1988 (Mon.)

Aicello Chemical Co., Ltd.
Aisero Kagaku K.K.
TSE #: 3407

Address/Telephone:

45, Koshikawa, Ishimakihon-hachi,
Toyohashi-shi, Aichi 441-11
Tel: 0532-88-4111, Fax: 0532-88-5102

Business Description:

Main Products:

1. Polyethylene films
2. Polyethylene anti-rust films
3. Polyethylene shrink films

Since its establishment in 1933, the company has developed many of its own products, and has made significant contributions to the wrapping and distribution industries. The company continues to develop new items, not limited only to the field of wrapping films.

SIC Code(s): 3081

Chief Exec. Officer: Nobuhiro Makino, President

Contact: Seiichi Itoh, Manager,
Development Operations Dept.

Established: 1933

Capital: ¥200 million

Revenue:	March, 1989	¥10,130 million
	March, 1990	¥10,337 million
	March, 1991	¥10,900 million

Banks: Sumitomo Bank, Tokai Bank, Aichi Bank, The Shoko
Chukin Bank

Branches:

Factories: Main Factory (Toyohashi-shi)

Laboratories:

Parent Co(s):

Subsidiaries:

News Citations:

TITLE: Aicello Develops High Performance Photosensitive Film
REFR: Nikkei Sangyo Shimbun, October 11, 1990 (Thurs.), p.14;
COMLINE-CCH, p.4
LOAD: October 18, 1990 (Thurs.)

TITLE: Aicello Chemical Develops New Biodegradable Film
REFR: Nikkei Sangyo Shimbun, December 15, 1989 (Fri.), p.4;
COMLINE-CBI, p.1
LOAD: December 18, 1989 (Mon.)

TITLE: Film-Type Soap 100 Microns Thick
REFR: COMLINE-CNE, p.3
LOAD: August 19, 1986 (Tues.)

Asahi Chemical Industry Co., Ltd.
Asahi Kasei Kogyo K.K.
TSE #: 3407

Address/Telephone:

Hibiyamitsui Bldg.
1-1-2, Yuraku-cho,
Chiyoda-ku, Tokyo 100
Tel: 03-3507-2730, Fax: 03-3507-2005

Business Description:

Main Products:

1. Chemicals

2. Synthetic resins
3. Synthetic fibres
4. Construction materials and housing
5. Biotech, medical and food products

Major producer of the above, with subsidiaries and affiliates worldwide. The company's strong R&D sections are continually developing new products such as coated fabrics, synthetic rubbers, factory automation systems, and pharmaceuticals.

SIC Code(s): 2821, 2824, 2834, 3069, 3089, 2822, 2823,
2833, 2836

Chief Exec. Officer: Reiichi Yumikura, President

Contact: Reiichi Yumikura, President

Established: 1931

Capital: ¥73,100 million

Revenue:	March, 1988	¥765,483 million
	March, 1989	¥817,811 million
	March, 1990	¥879,307 million

Banks: Sumitomo Bank, Dai-Ichi Kangyo Bank, Fuji Bank,
Industrial Bank of Japan, Long Term Credit Bank of Japa

Branches:

Factories:

Laboratories: Kawasaki Technical Lab (Kawasaki-shi),
Technical Lab (Fuji-shi), Lab (Fuji-shi), Lab (Fuji-shi),
Lab (Fuji-shi), Lab (Takatsuki-shi), Lab (Kawasaki-shi),
Lab (Kawasaki-shi), Lab (Hyuga-shi), Lab (Nobeoka-shi),
Lab (Nobeoka-shi)

Parent Co(s):

Subsidiaries:

News Citations:

TITLE: Asahi Chemical Develops New Technique for Extruding PPS
Resin
REFR: Japan Industrial Journal, January 4, 1991 (Fri.), p.1;
COMLINE-CIA, p.4
LOAD: January 8, 1991 (Tues.)

TITLE: Asahi Chemical Begins Operations at New Polypropylene
Production Facility
REFR: Nikkei Sangyo Shimbun, December 21, 1990 (Fri.), p.14;
COMLINE-CCH, p.5
LOAD: December 28, 1990 (Fri.)

TITLE: Asahi Chemical Industry and Kowa to Launch Natural Human
TPA Drug Next Year
REFR: Nikkei Sangyo Shimbun, December 21, 1990 (Fri.), p.17;
Nihon Keizai Shimbun, December 20, 1990 (Thurs.), p.13;
Yomiuri Shimbun, December 20, 1990 (Thurs.), p.26;
Asahi Shimbun (E), December 20, 1990 (Thurs.), p.18;

COMLINE-CBI, p.5
LOAD: December 25, 1990 (Tues.)

TITLE: Asahi Chemical Establishes Hollow Injection-Molding Technology
REFR: Nikkan Kogyo Shimbun, December 4, 1990 (Tues.), p.17;
Nikkei Sangyo Shimbun, December 4, 1990 (Tues.), p.13;
COMLINE-CCH, p.2
LOAD: December 5, 1990 (Wed.)

TITLE: Asahi Chemical Synthesizes Highly Crystalline Polyacrylonitrile
REFR: Japan Industrial Journal, December 3, 1990 (Mon.), p.17;
COMLINE-CCH, p.1
LOAD: December 4, 1990 (Tues.)

Asahipen Corporation
K.K. Asahipen
TSE #: 4623

Address/Telephone:

4-1-12, Tsurumi,
Tsurumi-ku, Osaka 538
Tel: 06-931-5175, Fax: 06-931-5611

Business Description:

- Main Products:**
1. Water-based paints
 2. Synthetic resin-based paints
 3. Lacquers

Originally established in 1940 as Daiwa Toryo Kogyojo by former president Nakata Shichiro, and began manufacture and marketing of general-purpose paints. The company was renamed Asahi Paint K.K. in 1947 and began focusing on home-use paints in 1962. The name was changed to Asahipen Corporation in 1965, and the company currently has 38 sales offices throughout Japan and has developed a substantial customer service network.

SIC Code(s): 2851

Chief Exec. Officer: Hirofumi Tanaka, President
Contact: Hirofumi Tanaka, President
Established: 1947
Capital: ¥2,808.25 million

Revenue:	September, 1988	¥12,759 million
	September, 1989	¥15,116 million
	March, 1990	¥8,220 million

Banks: Sanwa Bank, Daiwa Bank, Sumitomo Bank, Bank of Osaka, Mitsubishi Bank Mitsui, Taiyo Kobe Bank, Tokai

Bank

Branches: Tokyo Head Office (Koto-ku), Osaka Branch (Osaka-shi), Sendai Branch (Sendai-shi), Saitama Branch (Fukaya-shi), Nagoya Branch (Komaki-shi), Hiroshima Branch (Aki-gun, Hiroshima-ken), Matsuyama Branch (Matsuyama-shi), Fukuoka Branch (Kasuya-gun)

Factories: Hyogo Factory (Kato-gun)

Laboratories:

Parent Co(s):

Subsidiaries

News Citations:

TITLE: Asahipen To Expand into Cosmetics Business With Purchase of Teijin Papilio Cosmetics
REFR: COMLINE-CCH, p.6
LOAD: April 3, 1987 (Fri.)

Dow Corning Toray Silicone Co., Ltd.
Toreh Dau Koningu Shilikon K.K.

Address/Telephone:

Mitsui Bldg. No. 6,
2-3-16, Nihombashi-Muromachi
Chiyoda-ku, Tokyo, 103
Tel: 03-3246-1651, Fax: 03-3243-1577

Business Description:

- Main Products:**
1. Silicone Products

The company was originally established in Tokyo in December of 1966, as Toray Silicone Co., Ltd. The company began importing Dow Corning's products in April of the following year, and changed its name to Toray Dow Corning Co., Ltd. in December of 1989.

SIC Code(s): 3291, 3339, 2821, 2822, 2869

Chief Exec. Officer: Masami Morinaka, President
Contact: Isao Nakamura, Manager, General Affairs Dept.
Established: 1966
Capital: ¥700 million

Revenue:	March, 1988	¥28,683 million
-----------------	-------------	-----------------

Banks: Mitsui Bank, Daiichi Kangyo Bank, Sumitomo Bank, Mitsubishi Bank, Long Term Credit Bank of Japan, Nihon Kogyo Bank, Mitsui Trust Bank, CITIBANK S.A.

Branches: Osaka Branch (Kita-ku), Nagoya Branch (Nagoya-shi), Kyushu Branch (Chuo-ku, Fukuoka-shi), Hiroshima Branch (Hiroshima-shi), Hokuriku Branch (Kanazawa-shi), Minami Kanto Branch (Atsugi-shi), Kita Kanto Branch (Kumagaya-shi), Higashi Kanto Branch (Ichihara-shi), Sendai Branch (Sendai-shi), Hokkaido Branch (Sapporo-shi)

Factories: Chiba Factory (Chiba-shi), Fukui Factory (Sakai-gun, Fukui-ken)

Laboratories:

Parent Co(s): Toray Co., Ltd., Dow Corning Corporation

Subsidiaries:

News Citations:

TITLE: MITI to Conduct Organosilicon Materials Development Project
REFR: Nihon Keizai Shimbun, July 14, 1989 (Fri.), p.5;
COMLINE- CCH, p.1
LOAD: July 17, 1989 (Mon.)

TITLE: Nippon Sheet Glass Establishes Joint Venture in Japan for Hard Coating
REFR: Nikkei Sangyo Shimbun, February 9, 1989 (Thurs.), p.20;
Nikkan Kogyo Shimbun, February 9, 1989 (Thurs.), p.13;
COMLINE- CCH, p.8
LOAD: February 10, 1989 (Fri.)

TITLE: Dow Corning Experiencing Brisk Sales of "Antifoam 90" Series
REFR: Nippon Senshoku Shimbun, COMLINE- CXE, p.1
LOAD: December 5, 1988 (Mon.)

TITLE: Gunze, Dow Corning to Collaborate in Developing and Marketing Artificial Skin Material
REFR: Nikkan Kogyo Shimbun, November 2, 1988 (Wed.), p.1;
COMLINE-CBI, p.1
LOAD: November 4, 1988 (Fri.)

TITLE: Dow Corning Begins Full-Scale Marketing of Silicone Rubber Bags for Medical Use
REFR: Gomu Times, September 12, 1988 (Mon.), p.3;
COMLINE-CXE, p.2
LOAD: September 19, 1988 (Mon.)

TITLE: Dow Corning Japan Marketing Device to Optimize Use of Tissue in Cosmetic Surgery
REFR: Nikkei Sangyo Shimbun, August 30, 1988 (Tues.), p.13;
COMLINE-CBI, p.4
LOAD: August 31, 1988 (Wed.)

TITLE: Silicon Chemical Research Society Established by Government, I, and Academia
REFR: Kagaku Shimbun, August 1, 1988 (Mon.), p.1;
COMLINE-CXE, p.1
LOAD: August 1, 1988 (Mon.)

TITLE: Dow Corning Marketing Silicone Rubber Catheter
REFR: Nikkei Sangyo Shimbun, July 8, 1988 (Fri.), p.24;
COMLINE-CBI, p.6
LOAD: July 11, 1988 (Mon.)

TITLE: GE and UCC to Consolidate Silicone Business, Forming World's Second Largest Silicone Power
REFR: Gomu Hochi Shimbun, June 13, 1988 (Mon.), p.12;
COMLINE- CXE, p.1
LOAD: June 13, 1988 (Mon.)

TITLE: Moves in the Silicone Industry, Entering New Era of Growth and Internationalization
REFR: Gomu Hochi Shimbun, June 13, 1988 (Mon.), p.1;
COMLINE- CXE, p.2
LOAD: June 13, 1988 (Mon.)

TITLE: Trends in the Silicone Market
REFR: Japan Industrial Journal, June 9, 1988 (Thurs.), p.9;
COMLINE-CXE, p.4
LOAD: June 6, 1988 (Mon.)

TITLE: Toray Silicone Actively Conducting New Product Development, Markets Ultra-Fine Silicone Powders
REFR: Gomu Times, May 16, 1988 (Mon.), p.4; COMLINE-CXE, p.1
LOAD: May 23, 1988 (Mon.)

TITLE: Toshiba Silicone Establishes Joint Venture in Korea
REFR: Gomu Times, May 16, 1988 (Mon.), p.1; COMLINE-CXE, p.2
LOAD: May 23, 1988 (Mon.)

TITLE: Toray Silicone Strengthening User-Oriented Marketing Activity
REFR: Gomu Hochi Shimbun, April 11, 1988 (Mon.), p.9;
COMLINE- CXE, p.3
LOAD: May 20, 1988 (Fri.)

TITLE: Silicone Rubber Increasing in Demand, New Applications Development Needed
REFR: Gomu Times, May 16, 1988 (Mon.), p.4; COMLINE-CXE, p.2
LOAD: May 16, 1988 (Mon.)

TITLE: Toshiba Silicone Cooperates with US GE to Advance into Korea
REFR: Gomu Hochi Shimbun, May 16, 1988 (Mon.), p.10;
COMLINE- CXE, p.3
LOAD: May 16, 1988 (Mon.)

TITLE: Interview with Hirofumi Miyashita, Manager of Tokyo No.2 Sales Dept., Shin-Etsu Chemical
REFR: Gomu Hochi Shimbun, April 11, 1988 (Mon.), p.8;
COMLINE- CXE, p.1
LOAD: May 2, 1988 (Mon.)

TITLE: Dow Corning to Invest in Sumitomo Chemical's PC Resin Subsidiary
REFR: Nihon Keizai Shimbun, April 23, 1988 (Sat.), p.8;
Japan Industrial Journal, April 23, 1988 (Sat.), p.3;
Nikkei Sangyo Shimbun, April 23, 1988 (Sat.), p.7;
Nikkan Kogyo Shimbun, April 23, 1988 (Sat.), p.1;
COMLINE-CCH, p.8
LOAD: April 26, 1988 (Tues.)

TITLE: Silicone Rubber Production Accelerating
REFR: Gomu Hochin Shimbun, April 11, 1988 (Mon.), p.1;
COMLINE- CXE, p.4
LOAD: April 25, 1988 (Mon.)

TITLE: US Dow Corning to Construct Basic Research Center for

REFR: Silicon-Related Materials
Japan Industrial Journal, February 22, 1988 (Mon.), p.14;
COMLINE-CXE, p.8
LOAD: February 29, 1988 (Mon.)

TITLE: Silicon Chemistry: Outstanding Polymer Research
REFR: Nikkan Kogyo Shimbun, January 21, 1988 (Thurs.), p.5;
COMLINE-CXE, p.1
LOAD: February 8, 1988 (Mon.)

TITLE: Dow Corning Markets Silicone-Based Resin- Modifying Pellets
REFR: Chemical Industry, January 26, 1988 (Tues.), p.8;
COMLINE-CXE, p.6
LOAD: February 1, 1988 (Mon.)

TITLE: Dow Corning Japan Markets Granular Plastics Modifier
REFR: Nikkei Sangyo Shimbun, January 22, 1988 (Fri.), p.21;
COMLINE-CXE, p.7
LOAD: January 25, 1988 (Mon.)

TITLE: Coupling Agents
REFR: Chemical Daily, December 9, 1987 (Wed.); COMLINE-CXE, p.1
LOAD: January 4, 1988 (Mon.)

TITLE: A Review of the Japanese Plastics Industry in 1987 - Silicone
REFR: Plastics '87 (COMLINE Silicone File); COMLINE-CXE, p.3
LOAD: December 21, 1987 (Mon.)

TITLE: Toray Silicone Develops New Type of Silicone Adhesive
REFR: COMLINE-CCH, p.2
LOAD: November 24, 1987 (Tues.)

TITLE: Toray Silicone Markets SGS Sealing Material and Other New
Products
REFR: Chemical Daily, July 20, 1987 (Mon.); COMLINE-CXE, p.1
LOAD: August 24, 1987 (Mon.)

TITLE: Dow Corning Developing Products for Use in the Medical Field
REFR: Chemical Daily, July 20, 1987 (Mon.); COMLINE-CXE, p.2
LOAD: August 24, 1987 (Mon.)

JSP Corporation

K.K. JSP

TSE #: 7942

Address/Telephone:

2-1-1, Uchisaiwai-cho,
Chiyoda-ku, Tokyo 100
Tel: 03-3503-6988, Fax: 03-3581-2476

Business Description:

Main products:

1. Foamed polystyrene sheets
2. Foamed polystyrene boards
3. Foamed polyolefins

Since its establishment, the company has been involved in the development and industrial application of plastic

foaming technologies. The company currently handles high-performance, economical plastic products, concentrating mainly on those produced using foaming technologies. The company uses the advantageous properties of foamed materials to produce a wide range of products which include food containers, cushioning materials, agricultural materials, display materials, architectural insulating materials, automobile parts, and sports equipment.

SIC Code(s): 3086

Chief Exec. Officer: Masayo Uchiyama, President

Contact: Shuji Nagamune

Established: 1962

Capital: ¥6,513 million

Revenue:	March, 1988	¥27,749 million
	March, 1989	¥31,414 million
	March, 1990	¥31,638 million

Banks: Long Term Credit Bank of Japan, Sumitomo Bank, Mitsubishi Trust & Banking Corp., Mitsubishi Bank, Yokohama Bank, Ashikaga Bank, Tokyo Sowa Bank, Norinchukin Bank

Branches:

Factories: Hokkaido Factory (Ebetsu-shi), Kanuma Factory (Kanuma-shi), Hiratsuka Factory (Hiratsuka-shi), Kansai Factory (Ibo-gun, Hyogo-ken), Kyushu Factory (Kamato-gun, Kumamoto)

Laboratories: Kanuma Lab (Kanuma-shi)

Parent Co(s): Mitsubishi Gas Chemical Company, Inc.

Subsidiaries: Nihon Zampakku K.K. (Shinagawa-ku, Tokyo), Seihoku Pakehji K.K. (Kashiwa-shi, Chiba-ken), JSP America Inc. (New York, U.S.), J&V Foam Products Inc. (California, U.S.), 3 other companies

News Citations:

TITLE: JSP to Begin Production of Car Bumper Material Next Year
REFR: Nikkei Sangyo Shimbun, November 16, 1990 (Fri.), p.14;
COMLINE-CCH, p.3
LOAD: November 19, 1990, (Mon.)

TITLE: JSP to Begin Full-Scale Marketing of Recycled Foam-Plastic Products
REFR: Nikkei Sangyo Shimbun, November 15, 1990 (Thurs.), p.10;
COMLINE-CCH, p.5
LOAD: November 18, 1990 (Fri.)

TITLE: JSP Develops Foam Expansion Technology Using No CFCs
REFR: Nikkei Sangyo Shimbun, September 6, 1990 (Thurs.), p.2;
Nikkan Kogyo Shimbun, September 6, 1990 (Thurs.), p.15;
COMLINE-CCH, p.2
LOAD: September 7, 1990 (Fri.)

TITLE: JSP to Produce Polystyrene-Foam Sheet in Malaysia
REFR: Nikkei Sangyo Shimbun, August 8, 1990 (Wed.), p.12;
COMLINE-CCH, p.4
LOAD: April 12, 1989 (Wed.)

TITLE: Waste Plastics Disposer Uses Steam
REFR: COMLINE-CNE, p.1
LOAD: July 28, 1986, (Mon.)

Osaka Sanso Kogyo, Ltd.

Osaka Sanso Kogyo K.K.

TSE #: 4089

Address/Telephone:

Sumitomo Seimei Shin-Osaka Kita Bldg., 7th Floor,
4-1-14, Miyahara,
Yodogawa-ku, Osaka 532
Tel: 06-396-3181, Fax: 06-396-3199

Business Description:

Main Products:

1. Oxygen
2. Nitrogen
3. Argon

SIC Code(s): 2813

Chief Exec. Officer: Masataka Tamura, President

Contact: Masataka Tamura, President

Established: 1934

Capital: ¥4,898.96 million

Revenue:	September, 1988	¥41,902 million
	September, 1989	¥46,365 million
	September, 1990	¥51,398 million

Banks: Industrial Bank of Japan, Nippon Credit Bank,
Mitsubishi Bank, Toyo Trust and Banking Company,
Mitsubishi Trust & Banking Corp., Yamaguchi Bank,
Hiroshima Bank, Chugoku Bank, Sanwa Bank, Sumitomo
Bank, Daiwa Bank, Mitsui Taiyo Kobe Bank

Branches: Tokyo Branch (Minato-ku), Nagoya Branch
(Nagoya-shi), Kinki Branch (Amagasaki-shi), Chugoku
Branch (Kurashiki-shi), Kyushu Branch (Kitakyushu-shi)

Factories: Amagasaki Factory (Amagasaki-shi),
Himeji-factory (Himeji-shi)

Laboratories:

Parent Co(s):

Subsidiaries: Daisan Gus Shoji (Amagasaki-shi), Bocho
Daisan (Kudamatsu-shi, Yamaguchi-ken), Himeji Daisan
(Himeji-shi), Fukuoka Daisan (Fukuoka-shi), Etec
(Akashi-shi), Kurosaki Sanso

News Citations:

TITLE: Osaka Sanso, BOC Group to Unify Semiconductor Gas
Business
REFR: Nikkan Kogyo Shimbun, November 20, 1990 (Tues.), p. 19;
COMLINE-CCH, p.3
LOAD: November 21, 1990 (Wed.)

TITLE: Osaka Sanso and BOC Group to Develop Gases for
Semiconductor Industry
REFR: Nikkei Sangyo Shimbun, October 19, 1990 (Fri.), p.15;
COMLINE-CCH, p.2
LOAD: October 22, 1990 (Mon.)

TITLE: Osaka Sanso Kogyo Markets New Metal Die Cooling System
and Compact Burr Remover
REFR: Japan Industrial Journal, November 15, 1988 (Tues.), p.8;
COMLINE-CIA, p.5
LOAD: November 16, 1988 (Wed.)

TITLE: Osaka Sanso to Market High-Purity Gases
REFR: Nikkei Sangyo Shimbun, August 5, 1988 (Fri.), p.19;
Nikkan Kogyo Shimbun, August 5, 1988 (Fri.), p.13;
COMLINE-CCH, p.1
LOAD: August 8, 1988 (Mon.)

TITLE: Osaka Sanso Develops Ultra-Low-Temperature Dew-Point
Meter for Measuring Trace Amounts of Water in Gases
REFR: Nikkan Kogyo Shimbun, August 1, 1988 (Mon.), p.20;
COMLINE-CCH, p.4
LOAD: August 2, 1988 (Tues.)

TITLE: Osaka Sanso Develops Silicon Sensor
REFR: COMLINE-CCH, p.2
LOAD: October 15, 1987 (Thurs.)

TITLE: Quantitative Analytical Method Developed for In- Furnace
Determination of Impurities in Molten Steel
REFR: COMLINE-CCH, p.4
LOAD: April 8, 1987 (Wed.)

TITLE: Osaka Sanso Kogyo Develops Automatic Semiconductor Gas
Supply System
REFR: COMLINE-CCH, p.5
LOAD: September 26, 1986 (Fri.)

Union Sekiyu Kogyo Co., Ltd.
Yunion Sekiyu Kogyo K.K.

Address/Telephone:

Dainidai Bldg.,
2-8-12, Nishishimbashi
Minato-ku, Tokyo
Tel: 03-3502-5211, Fax: 03-3502-5215

Business Description:

Main Products:

1. Naphthenic lubricant oils
2. Transformer oils
3. Rubber processing oils
4. Liquid paraffin oils
5. Sodium bisulphite, naphthenic acid

Formed as a subsidiary of Koa Petroleum Co., Ltd. to specialize in the production of lubrication oils, the company received a capital infusion from Idemitsu Kyosan Co., Ltd. in 1975. The company is a producer of various chemical products, and currently supplies lubricant oils and asphalt to Idemitsu, and fuel oil to both Koa Petroleum and Idemitsu.

The company imports naphthene based crude oil and refines it by vacuum and furfural distillation, and produces food additive grade liquid paraffin through a sulphuric acid process. It also manufactures and sells sodium bisulphite and naphthenic acid.

SIC Code(s): 2951, 2992, 2869

Chief Exec. Officer: Gosuke Atsumi, President

Contact: Gosuke Atsumi, President

Established: 1947

Capital: ¥64 million

Revenue:	March, 1988	¥6,447 million
	March, 1989	¥6,262 million
	March, 1990	¥6,256 million

Banks: Sumitomo Bank, Tokai Bank

Branches:

Factories: Iwakuni Refinery (Iwakuni-shi)

Laboratories:

Parent Co(s):

Subsidiaries:

News Citations:

TITLE: Ube Industries and Three Chemical Companies to Establish
Joint Venture for Polypropylene Production
REFR: COMLINE-CTR, p.8
LOAD: November 28, 1990 (Mon.)

Biosensor Laboratories Co., Ltd.
K.K. Biosensor Kenkyujo

Address/Telephone:

3-41-8, Takada
Toshima-ku, Tokyo 171
Tel: 03-3987-7111, Fax: 03-3980-0959

Business Description:

The company is conducting R&D on biosensors for medical use.

SIC Code(s): 3841

CEO: Toshiaki Yamaguchi, President
Contact: Toshiaki Yamaguchi, President
Established: 1988
Employees: 32
Capital: ¥916.8 million

Revenue:

Banks:

Branches:

Factories:

Laboratories: BS Lab Kuraray (Kurashiki-shi), BS Lab Tosoh (Ayase-shi), BS Lab. HPK (Hamkita-shi)

Parent Co(s): Chugai Pharmaceutical Co., Ltd., Kuraray Co., Ltd., Tosoh Corp., Hamamatsu Photonics K.K.

Subsidiaries:

News Citations:

Jujo Paper Co., Ltd.
Jujo Seishi K.K.

Address/Telephone:

Shin-yurakucho Bldg,
1-12-1, Yuraku-cho
Chiyoda-ku, Tokyo 100
Tel: 03-3211-7311, Fax: 03-3216-4753

Business Description:

Main Products:

1. Newsprint
2. Printing paper
3. OA paper

The company is the third largest paper manufacturer in Japan, with a market share of 6.6%. One of the company's advantages is its broad range of product lines.

SIC Code(s): 2621, 0811, 0831

CEO: Takeshiro Miyashita, President
Contact: Hideo Yokota, Director, Overseas Business
Established: 1949
Employees: 4400
Capital: ¥42,791 million

Revenue:	March, 1988	¥342,619 million
	March, 1989	¥366,884 million
	March, 1990	¥393,514 million

Banks: Mitsui Bank

Branches:

Factories: Fushiki Mill (Fushiki-shi), Miyakijima Mill (Osaka-shi), Yatsushiro Mill (Yatsushiro-shi), Ishinomaki Mill (Ishinomaki-shi), Kushiro Mill (Kushiro-shi), Nakos Mill (Iwaki-shi)

Laboratories: Central Laboratory (Kita-ku)

Parent Co(s):

Subsidiaries: Jujo Paperboard Co., Ltd. (Chuo-ku), Jujo Kimberly Co., Ltd. (Chuo-ku), Jujo Lumber Co., Ltd. (Chuo-ku), Jujo Kenzai Co., Ltd. (Takaoka-shi), and 3 other subsidiaries

News Citations:

TITLE: Jujo Paper Begins Biotechnology-Based Flower Business
REFR: Nikkei Sangyo Shimbun, June 15, 1990 (Fri.), p.1; COMLINE-CBI, p.3
LOAD: June 18, 1990 (Mon.)

TITLE: Novo Nordisk Preparing for Collaboration with Jujo Paper in Enzyme Development
REFR: Japan Industrial Journal, June 1, 1990 (Fri.), p.16; Nikkan Kogyo Shimbun, June 1, 1990 (Fri.), p.21; COMLINE-CBI, p.2
LOAD: June 4, 1990 (Mon.)

TITLE: Jujo Paper to Establish Subsidiary in West Germany for Production, Marketing of Thermal Paper
REFR: Japan Industrial Journal, April 11, 1990 (Wed.), p.1; COMLINE-CCH, p.3
LOAD: April 12, 1990 (Thurs.)

TITLE: Jujo Paper Develops Enzyme Technology to Remove Wood Pitch
REFR: Nikkan Kogyo Shimbun, March 23, 1990 (Fri.), p.14; Nikkei Sangyo Shimbun, March 23, 1990 (Fri.), p.17; COMLINE-CCH, p.1
LOAD: March 26, 1990 (Mon.)

TITLE: Jujo Paper and Finnish Firm to Cooperate on Production of Heat-Sensitive Paper
REFR: Nihon Keizai Shimbun, October 14, 1989 (Sat.), p.9; Japan Industrial Journal, October 14, 1989 (Sat.), p.1; COMLINE-CCH, p.5
LOAD: October 17, 1989 (Tues.)

Miura Mericlone Ltd.

Address/Telephone:

1331, Nishitomioka,
Isehara-shi, Kanagawa-ken 259-11
Tel: 0463-95-4730, Fax: 0463-95-4771

Business Description:

The company manufactures horticultural seedlings such as mini cattleya, using biotechnological methods which include tissue culture.

SIC Code(s): 161, 181

CEO: Jiro Miura, President
Contact: Jiro Miura, President
Established: 1971
Employees: 20
Capital: ¥100 million

Revenue: August, 1989 ¥ 2,600 million

Banks:

Branches:

Factories:

Laboratories: Bio Research Laboratory (Isehara-shi)

Parent Co(s):

Subsidiaries:

News Citations:

Mizuho Medy Co., Ltd. K.K. Mizuho Medy

Address/Telephone:

5-4, Fujinoki-machi,
Tosu-shi, Saga-ken 841
Tel: 0942-85-0303, Fax: 0942-85-0307

Business Description:

Main Products:

1. Immunological reagents
2. Reagents for automatic analyzing equipment
3. Reagent kits for manual testing
4. Animal sera and antibodies for culture use

The company manufactures and markets drugs for use in ectosomatic diagnosis, and is importing and marketing polyclonal antibodies and animal sera. The company also provides scientific and technological services and information relating to the above.

SIC Code(s): 2835, 2836, 3841

CEO: Fuminari Karakawa, President
Contact: Hiroto Noda, Manager, Marketing and Planning Dept.

Established: 1977

Employees: 99

Capital:

Revenue:	December, 1988	¥978 million
	December, 1989	¥1,225 million

Banks: Sanwa Bank

Branches: Main Marketing Office (Fukuoka-shi), Tokyo Office (Taito-ku), Nagoya Office (Nagoya-shi), Osaka Office (Osaka-shi), Shikoku Office (Matsuyama-shi)

Factories: Factory (Tosu-shi)

Laboratories: Laboratory (Tosu-shi)

Parent Co(s):

Subsidiaries:

News Citations:

Nippon Centocor K.K.
Nippon Sentokoa K.K.

Address/Telephone:

Landmark Shiba-Koen Bldg,
1-2-6, Shiba-koen
Minato-ku, Tokyo 107
Tel: 03-3459-6301, Fax: 03-3459-9077

Business Description:

Main Products:

1. "HA-1A2"
2. "Centorex"
3. "Panorex"

The company is importing and marketing
pharmaceuticals and diagnostics.

SIC Code(s): 2834, 2835, 2836,

CEO: Yasuhiro Takahashi, President
Contact: Yasuhiro Takahashi, President
Established: 1987
Employees:
Capital:

Revenue:

Banks:

Branches:

Factories:

Laboratories:

Parent Co(s): Centocor, Inc. (U.S.)

Subsidiaries:

News Citations:

Sakata Seed Corp.
K.K. Sakata no Tane
TSE #: 1377

Address/Telephone:

3-1-7, Nagata-Higashi, Minami-ku
Yokohama-shi, Kanagawa-ken 232
Tel: 045-715-2111, Fax: 045-712-1775

Business Description:

Main Products:

1. Vegetable and Flower Seeds
2. Horticultural Supplies
3. Plants and seedlings

The company, which maintains an abundant selection of
F1 dominant strains, has a good reputation for supply in
Europe and the U.S. of flowering plants such as pansies
and primroses. In Japan, the company is a top supplier
of melon, spinach, and corn seeds.

SIC Code(s): 0181

CEO: Zenichiro Kaneko, President
Contact: Junichi Obara, Head Officer, Shacho-shitsu
Established: 1913
Employees: 560
Capital: ¥13,500 million

Revenue:	May, 1988	¥25,200 million
	May, 1989	¥27,600 million
	May, 1990	¥30,000 million

Banks: Dai-ichi Kangyo Bank, others

Branches: Hazawa Distribution Center (Yokohama-shi,
Kanagawa Pref.)

Factories: Kimitsu Breeding Station (Kimitsu-gun), Misato
Breeding Station (Minami Azumi-gun, Nagano Pref.)

Laboratories: Plant Biotechnology Center (Kimitsu-gun),
Kakegawa Research Center (Kakegawa-shi, Shizuoka
Pref.)

Parent Co(s):

Subsidiaries: Sakata Seed America Inc. (California, U.S.),
Sakata Seed Europe B.V. (Hoofddorp, Holland)

News Citations:

TITLE: Sakata Seed to Establish New Plant Breeding Facilities in US
REFR: Nikkan Kogyo Shimbun, December 4, 1989 (Mon.), p.17;
COMLINE-CBI, p.1
LOAD: December 5, 1989 (Tues.)

TITLE: Sakata Seed Buys Site in Yamagata Prefecture for Use in
Seed Breeding Studies
REFR: Nikkei Sangyo Shimbun, November 22, 1989 (Wed.), p. 17;
COMLINE-CBI, p.5
LOAD: November 24, 1989 (Fri.)

TITLE: Sakata Seed to Market Seeds for 15 Types of Edible Flowers
REFR: Nikkan Kogyo Shimbun, July 11, 1989 (Tues.), p.12;
COMLINE-CBI, p.5
LOAD: July 12, 1989 (Wed.)

TITLE: Sakata Seed to Establish New Experimental Seedling Farm
REFR: Japan Industrial Journal, June 16, 1989 (Fri.), p.16;
COMLINE-CBI, p.5
LOAD: June 19, 1989 (Mon.)

TITLE: Sakata Seed Using Cell Fusion Techniques to Develop
Disease-Resistant Eggplant Strains
REFR: Nikkei Sangyo Shimbun, November 30, 1988 (Wed.), p. 19;
COMLINE-CBI, p.4
LOAD: December 1, 1988 (Thurs.)

Taiho Pharmaceutical Co., Ltd. Taiho Yakuhin K.K.

Address/Telephone:

1-27, Kandanishiki-cho,
Chiyoda-ku, Tokyo 101
Tel: 03-3294-4527, Fax: 03-3233-4057

Business Description:

Main Products:

1. Anticancer drug "UFT"
2. Anticancer drug "Futraful"
3. Nutrition drink "Tiovita Drink"

The company is conducting pharmaceutical-related activities ranging from R&D to manufacturing and marketing. The company, an affiliate of the Otsuka group, is one of the top manufacturers of anticancer drugs, and has also been successful with its OTC drug business (particularly nutrition drinks).

SIC Code(s): 2834

CEO: Yukio Kobayashi, President
Contact: International R&D Operations Dept.
Established: 1963
Employees: 1939

Capital: ¥200 million

Revenue:	June, 1988	¥67,700 million
	June, 1989	¥68,500 million
	June, 1990	¥70,200 million

Banks: Daiwa Bank

Branches:

Factories: Tokushima Manufacturing Plant (Tokushima-shi)

Laboratories: Cancer Research Laboratory (Hanno-shi),
Immunological & Cardiovascular Research Laboratory
(Hanno-shi), Biologocal Research Laboratory Toshimashi
Drug Safety Research Laboratory (Tokushima-shi), and
other 3 other laboratories

Parent Co(s):

Subsidiaries: Kitai Kasei Kogyo K.K. (Kodama-gun), Shinse
Iyaku K.K. (Bizen-shi), Taiho Alberta Ltd. (Alberta,
Canada)

News Citations:

TITLE: Taiho Pharmaceutical Acquires Shinzen Pharmaceutical
REFR: Nikkei Sangyo Shimbun, October 16, 1990 (Tues.), p.16;
Nihon Keizai Shimbun, October 16, 1990 (Tues.), p.13;
COMLINE-CBI, p.2
LOAD: October 17, 1990 (Wed.)

TITLE: Taiho Pharmaceutical Completes Construction of New Drug
Development Center in Saitama Prefecture
REFR: Nikkei Sangyo Shimbun, October 3, 1990 (Wed.), p.21;
COMLINE-CBI, p.5
LOAD: October 4, 1990 (Thurs.)

TITLE: Taiho Pharmaceutical to Market New Cephem Antibiotic
REFR: Nikkei Sangyo Shimbun, June 27, 1990 (Wed.), p.21;
COMLINE-CBI, p.6
LOAD: June 29, 1990 (Fri.)

TITLE: Taiho Pharmaceutical to Commercialize Drugs from East
Europe
REFR: Nihon Keizai Shimbun, April 1, 1990 (Sun.), p.5;
COMLINE-CBI, p.4
LOAD: April 3, 1990 (Tues.)

TITLE: Taiho Pharmaceutical to Begin Clinical Trials on Antibiotic
REFR: Nikkei Sangyo Shimbun, March 23, 1990 (Fri.), p.19;
COMLINE-CBI, p.4
LOAD: March 26, 1990 (Mon.)

Snow Brand Milk Products Co., Ltd.

Yukijirushi Nyugyo K.K.

TSE #: 2262

Address/Telephone:

13, Honshio-cho
Shinjuku-ku, Tokyo 160
Tel: 03-3226-2148, Fax: 03-3226-2106

Business Description:

Main Products:

1. Milk
2. Dairy products
3. Ice cream

Known as one of Japan's largest manufacturers of dairy products (butter and cheese), and is the leading producer of drinking milk. The company is also branching out aggressively in a number of research areas, including agricultural biotech, cattle embryo transfer, and high-yield seed research.

SIC Code(s): 2020, 0110, 0241

CEO: Katsuya Shono, President

Contact: Katsuya Shono, President

Established: 1950

Employees: 8100

Capital: ¥26,450 million

Revenue: March, 1989 ¥4,760 million

Banks:

Branches:

Factories:

Laboratories: Bioscience Research Laboratory
(Shimitsuga-gun), Technical Laboratory (Kawagoe-shi)

Parent Co(s):

Subsidiaries:

News Citations:

TITLE: Bioreactor Developed for Continuous Dissociation of Casein
REFR: Nikkan Kogyo Shimbun, December 10, 1990 (Mon.), p.19;
COMLINE-CBI, p.1
LOAD: December 11, 1990 (Tues.)

TITLE: Snow Brand Milk Products to Collaborate With US Firm in Development of Immunosuppressant
REFR: Nikkei Sangyo Shimbun, October 17, 1990 (Wed.), p.17; Nikkan Kogyo Shimbun, October 17, 1990 (Wed.), p.19; Japan Industrial Journal, October 17, 1990 (Wed.), p.13; COMLINE-CBI, p.6
LOAD: October 18, 1990 (Thurs.)

TITLE: Snow Brand Milk Products Develops Sensor to Monitor Viscosity of Microbial Culture Fluid
REFR: Nikkei Sangyo Shimbun, September 5, 1990 (Wed.), p.5; COMLINE-CBI, p.5
LOAD: September 7, 1990 (Fri.)

TITLE: Snow Brand Milk, Netsushin Develop Resistance Bulb Thermometer for High-Temperature Measurement in Food Industry
REFR: Nikkei Sangyo Shimbun, August 31, 1990 (Fri.), p.15; Nikkan Kogyo Shimbun, August 31, 1990 (Fri.), p.12; COMLINE-CBI, p.4
LOAD: September 3, 1990 (Mon.)

TITLE: Snow Brand Milk Products to Supply INRA with Manufacturing Technology for Fluid Viscosity Sensor
REFR: Nikkei Sangyo Shimbun, August 1, 1990 (Wed.), p.1; COMLINE-CBI, p.2
LOAD: August 2, 1990 (Thurs.)

TITLE: Snow Brand Milk, Otsuka Pharmaceutical to Collaborate in Clinical Trials, Marketing of Enteral Hyperalimentation Solution
REFR: Nikkei Sangyo Shimbun, July 10, 1990 (Tues.), p.19; COMLINE-CBI, p.1
LOAD: July 11, 1990 (Wed.)

TITLE: Snow Brand Milk Products Establishing String of Subsidiaries Overseas
REFR: Nikkei Sangyo Shimbun, June 25, 1990 (Mon.), p.19; COMLINE-CBI, p.2
LOAD: June 26, 1990 (Tues.)

TITLE: Snow Brand Milk Products, Fuji Spinning Isolate Lactoferrin from Milk
REFR: Nikkei Sangyo Shimbun, April 17, 1990 (Tues.), p.1; COMLINE-CBI, p.2
LOAD: April 18, 1990 (Wed.)

The following represents a detailed outline of the structure of the COMLINE Corporate Directory (CCD):

Table: CPNY

#	Name	Type	Length	Detailed Name
1	CONO	INTEGER	5 CHAR	COMPANY NUMBER
2	CO	TEXT	45 CHAR	COMPANY NAME
3	JCO	TEXT	45 CHAR	JAPANESE COMPANY NAME
4	TS	TEXT	6 CHAR	TSE CODE
5	AD	TEXT	38 CHAR	ADDRESS (PART 1)
6	AD2	TEXT	38 CHAR	ADDRESS (PART 2)
7	CY	TEXT	20 CHAR	CITY
8	PF	TEXT	20 CHAR	PREFECTURE
9	ZP	TEXT	6 CHAR	ZIP CODE
10	TE	TEXT	6 CHAR	TELEPHONE AREA CODE
11	PH	TEXT	18 CHAR	TELEPHONE NUMBER
12	FX	TEXT	18 CHAR	TELEPHONE FAX NUMBER
13	PC	TEXT	100 CHAR	SIC CODES
14	YR	INTEGER	4 CHAR	YEAR FOUNDED
15	CA	DOUBLE	16 CHAR	INITIAL CAPITAL
16	EM	INTEGER	6 CHAR	NUMBER OF EMPLOYEES
17	NO	TEXT	23 CHAR	CEO NAME
18	NOTL	TEXT	45 CHAR	CEO TITLE
19	CT	TEXT	23 CHAR	CONTACT NAME
20	CTTL	TEXT	45 CHAR	CONTACT TITLE
21	RV	DATE	8 CHAR	REVISION DATE
22	BK	TEXT	350 CHAR	BANKS
23	SADE1	TEXT	40 CHAR	REVENUE DESCRIPTION - 1
24	SA1	DOUBLE	16 CHAR	REVENUE - 1
25	SADE2	TEXT	40 CHAR	REVENUE DESCRIPTION - 2
26	SA2	DOUBLE	16 CHAR	REVENUE - 2
27	SADE3	TEXT	40 CHAR	REVENUE DESCRIPTION - 3
28	SA3	DOUBLE	16 CHAR	REVENUE - 3
29	BR	TEXT	350 CHAR	BRANCHES
30	FA	TEXT	350 CHAR	FACTORIES
31	LA	TEXT	350 CHAR	LABORATORIES
32	PN	TEXT	200 CHAR	PARENT COMPANY NAMES
33	SN	TEXT	400 CHAR	SUBSIDIARY COMPANY NAMES
34	PR	TEXT	600 CHAR	PRODUCT DESCRIPTION
35	DE	TEXT	600 CHAR	BUSINESS DESCRIPTION

Table: COCI

#	Name	Type	Length	Detailed Name
1	CONO	INTEGER	5 CHAR	COMPANY NUMBER
2	CINO	INTEGER	2 CHAR	CITATION NUMBER
3	CITL	TEXT	130 CHAR	CITATION TITLE
4	CIRF	TEXT	200 CHAR	CITATION REFERENCE
5	CILD	TEXT	40 CHAR	CITATION LOAD DATE
6	RV	DATE	8 CHAR	REVISION DATE

禁無断転載

平成 3 年 3 月 発行

発 行 財団法人 データベース振興センター
東京都港区浜松町二丁目4番1号
世界貿易センタービル7階
TEL 03-3459-8581

委託先 コムラインインターナショナル株式会社
東京都港区北青山三丁目12番7号
秋月ビル
TEL 03-3486-0696

印刷所 室田印刷株式会社
東京都中央区佃三丁目9番9号
TEL 03-3533-9241

